

1975 Picnic a big success . . .

Bolton Point Park was again crowded by Sulphiders on Friday, 28th November when the Annual Works Picnic was held.

This year, for the first time, the numbers were swelled by the Recreation Club's new rule which allows members not having any children of their own of picnic age (under 15 years), to bring along a child who receives full Picnic benefits.

With the fine weather prevailing all amusement devices were utilised to their fullest with the youngsters having a ball going from merry-go-round to horse-o-plane, pony rides and taking Mum and Dad out for a ferry boat ride on the Lake.

Sporting events were as usual all keenly contested and this was particularly so in the Tug-O-War event with eight teams competing for the First Prize trophy. Even a hastily-rigged illegal anchor by the ISF team (!) failed to stop the all-conquering Acid Plant team of, **Charlie Gilfillen, Tony Brown, Kevin Roworth, George Drosd, Arnold Bullard and Joe Moore** winning their way into the final where, after a hard pull, they defeated an Electricians team to give them their second consecutive win.

Another "second in a row" win went to fitter **David Enderby, (right)** who showed that his win in the 100 metre Sulphide Championship last year was no fluke when he easily took out the event this year again.

Much to the delight of spectators, flying thongs and tufts of grass travelled further than the ball quite a few times during the "Ladies - kicking the ball" contest, which was won by **Mrs. K. Milton.**

The absence of Recreation Club secretary-treasurer, **Edgar Hamonet**, through illness was an organisational blow but many hands pitched in to help out and for this the Committee would like to give thanks to all those who willingly assisted to make the day a success.

Every one of them deserves special praise, but perhaps we may be pardoned if we especially mention, **Vic Woodman**, for his part in looking after the ferry rides, **Charlie McPhee** and **Monty Taverner**, **Peter Leigh** and the rest of the team for the able running of the sporting events and retiree, **Bob Chedzey**, who hopped-in and "did his bit".

To these people and all the others, who are equally deserving of it, we say, "Thank You, for a job well done."

TOP: General Manager, Andy Thomson presents Tug-o-War trophy to skipper Kevin Roworth . . . CENTRE: The winning Tug-o-War team . . . LOWER: Wheelbarrow racers in action.



SC SAFETY NEWS

Right of way at Works Entrance . . .



Sergeant N. Campbell

Some laxity by motorists in observing right-of-way regulations (resulting in some "near-misses") at the Works entrance at Main Road prompted Safety Officer, Bob Esdaile, to seek the guidance of Sergeant N. Campbell, of Boolaroo Police, who provided us with the following reminder of our obligation to adhere to current motor traffic regulations.

"As a result of a request from the Safety Section of Sulphide Corporation I have been asked

to set out in detail traffic regulations relating to outgoing and incoming traffic to and from the Works.

"Traffic leaving Sulphide Corporation must give way to all traffic using the Main Road . . ."

It might also be mentioned the drivers should bring their vehicles to a stop prior to entering the Main Road if vehicles are approaching in either direction or turning into the Works from Main Road.

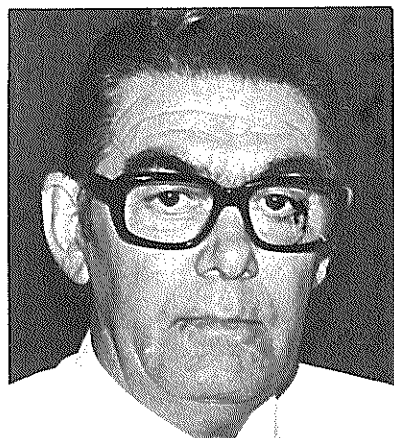
"Traffic travelling from Boolaroo to the Works and intending to make a right hand turn into the private road must move as close as practicable to the centre of the carriage of Main Road and must give way to all traffic approaching from the direction of Argenton until the turn can be made with safety.

"It is emphasised that all traffic turning right from Main Road to enter Sulphide Corporation has right-of-way over all traffic leaving the Works."

LOST TIME ACCIDENTS													
Department	Jan	Feb	Mar	Apr	May	Jun	Jul	Aug	Sep	Oct	Nov	Dec	Total
PRODUCTION	1	Nil	2	Nil	2	Nil	1	Nil	Nil	Nil	Nil		6
ENGINEERING	Nil	Nil	Nil	1	Nil	Nil	1	1	Nil	Nil	2		5
SERVICES	Nil	Nil	Nil	Nil	Nil	Nil	Nil	Nil	Nil	Nil	Nil		Nil
TOTAL	1	Nil	2	1	2	Nil	2	1	Nil	Nil	2		11
TOTALS 1974	4	3	3	8	3	1	7	3	5	2	Nil	3	42

Merry Christmas
Happy New Year
To All Readers

Au Revoir to Ian, Doug, Ken and Angus...



Ian Moon

Four retirements in the new year are important events both because of the personalities involved and because, between them, they represent a large slice of Sulphide history and experience.

These four are Messrs. Ian Moon, Doug Rich, Angus Orchard and Ken Sainsbury. Ken will be the first to leave us — he is retiring on 16 January, Ian on 6 February, Angus on 19 February and Doug the next day, 20 February.

All began working at Sulphide Corporation prior to 1950 and between them they have participated in many company developments, events and work areas.

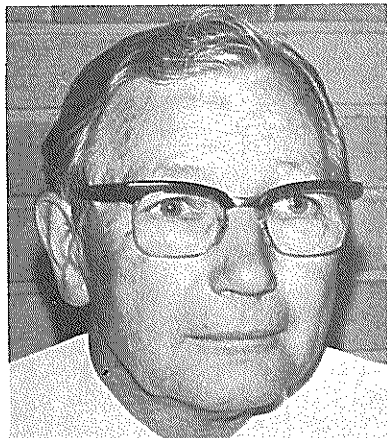
Ian Moon, Chief Engineer, came to Cockle Creek Works from Goninan's in February, 1948. His first position was that of Senior Draughtsman and his early jobs included the design of extensions at the Attunga limestone quarry and a new road system for the Works at Cockle Creek. He therefore has a very clear recollection of earlier days at Cockle Creek.

In 1948 Sulphide Corporation became a part of what is now the CRA Group and, with the long term objective of establishing a zinc smelter on this site, a major renovation of the Works was commenced. Appointed Works Engineer in 1950, Ian was closely associated with this and with the developments which followed. These included the TL Roasters, 'C' Acid Plant and new fertilizer plant which were commissioned in the mid fifties. Then followed the intensive planning for the Smelter complex, culminating in the commissioning of 'D' Plant in 1960 and the Sinter and ISF Plants in August, 1961. Ian was appointed Chief Engineer when his predecessor, the late Don Crawford, joined Comalco, just prior to the start-up of the Smelter.

Further developments in fertilizers were to follow in what Ian now looks back on as a particularly interesting stage in his career. These were the formation of Greenleaf Fertilizers and the design and construction of the plant at Kooragang. This extended over the period 1964 to 1969 and involved the commissioning of plant to manufacture sulphuric and phosphoric acid and high analysis fertilizers.

Ian made several overseas trips during the sixties, for fertilizer reasons and also in connection with the Zinc Refinery which commenced operations in 1968. He was in the UK from October, 1971 to March, 1973 as a member of the Sulphide Corporation team which assisted in the transfer of Avonmouth operations to AM&S. His special responsibility was administering the capital expenditure programme during a particularly busy period.

Ian comments that he considers himself fortunate to have been associated with the many developments which have taken place at this site and overseas. He believes his Group outlook has been broadened by travel, particularly his Avonmouth experience, and looks forward to keeping in touch with developments as opportunities permit. He considers we have a team at Cockle Creek which is competent in many fields and capable of handling any operating or development problems served up to it.



Doug Rich

In retirement Ian has no special plans; mainly, he is thinking about doing all those things he has not had time to do. He and his wife plan to do some travel — they are pretty experienced at this — particularly as two of their three daughters are overseas. And doubtless we will be seeing something of them both from time to time when they are at home.

Doug Rich, Commercial Manager, is another 1948 vintage Sulphider but with earlier Group experience with Herons Creek Timber Mills, in Newcastle. Doug came to Cockle Creek not long after the change in ownership of the company. He recalls that at this time people thought that BHP had taken Sulphide Corporation over!

He was appointed to the position of Assistant Accountant to the late Frank Johnson who succeeded the late Percy Jepson as Accountant. With the reorganisation which followed in 1949 Mr. Hamish Black, now General Manager — Finance and Administration for AM&S, was appointed Accountant and the long term partnership of Black and Rich was established.

Doug recalls the considerable amount of work which was done in reorganising office procedures in his early days at Sulphide Corporation. Then followed a particularly interesting period in which his special interest was in fertilizers. He played an important role in the closer liaison which was established with Australian Fertilizers and, for a period, was a member of the Pool Steering Committee. Doug believes these kinds of contacts gave us a broader outlook on business than we had experienced hitherto and, at the same time, activities like the annual fertilizer agents' conferences and visits to AFL at Port Kembla were most enjoyable and stimulating.

Doug continued his long association with Hamish Black in being appointed Deputy Works Accountant in 1960, Works Accountant in 1963, Chief Accountant in 1968 and Commercial Manager in the same year in connection with a management reorganisation.

He has been associated with several company "special" institutions, notably the Company Building Society of which he was the first chairman



Ken Sainsbury

and the Sulphide Pensions Fund, established in 1957 with Doug as first secretary.

Not long a widower Doug plans to give himself plenty of time to work out what he intends to do in his retirement longer term. Just at present he has enough to do about the house. He expects, of course, to visit his daughter and her family in Cootamundra and may consider wider travel in due course. One thing he can be assured of — Doug Rich will always be welcome at Sulphide and its functions.

Ken Sainsbury is one of the few present day Sulphiders, we would guess, who has had first hand operating experience of the old Barrier Roasters Plant. He began working there in May, 1949 after eight years at the BHP and, before that, in the country — Muswellbrook, Armidale and Wingham. He gained his Leaving Certificate at De La Salle College, Armidale and served his time as an electrician with Campbell and Co. at Muswellbrook.

At the B.R.'s Ken commenced as a chagemaker and from the Roasters went to the Grillo Acid Plant.

Selected to become a member of the First Trainee Foreman Group in 1953 Ken successfully completed his Foremanship Course and was appointed Shift Foreman in the Acid Plant. In 1956 he transferred to the Time Study Department whence he was appointed Acting Superintendent Traffic & Yard in June, 1956.

On the retirement of the late Mr. W. C. Rutherford, he was appointed Superintendent in January, 1957. Operations of this Department were merged into the Engineering Department in 1960 and Ken transferred to the Commercial Department and with the start up of the Smelter in 1961 became involved in Production Records until June last when he was transferred to the position of Stores Clerk.

Married to Lola Phipps of Denman, their family comprises Denise 34, Annette 32, Phillip 27, Michael 20. All except the youngest are married and they have 4 grandchildren. Michael is in the Public Service and is studying for a degree in Commerce at the National University in Canberra.



Angus Orchard

Ken also has no special plans at the moment for retirement. No doubt the family will keep him busy.

Writing a biography about **Angus Orchard** for the NEWS really feels like carrying coals to Newcastle — or something. Angus is synonymous with the COCKLE CREEK NEWS. Since 1951 he has written for it, drawn for it, photographed for it, done layout after layout and seen our publication through the most important production and distribution stages.

In the early days Angus' special contribution was in cartoon work which will be long remembered. He developed a greater use for photographs for the NEWS and in this way made gradual changes in style of presentation. This was especially evident in the full page front cover pictures which were a characteristic of the NEWS in the sixties. Angus was primarily responsible for introducing the new page size this year and with his layouts has certainly demonstrated the worthwhileness of more space per page.

But it is not only in NEWS work that A.O. has made a real contribution to Sulphide activities. He has taken thousands of pictures of all kinds of subjects over the years — engineering, technical, plants, people, social occasions, etc. etc. Many of them represent important slices of Sulphide history and, when inspecting them, a would-be historian regrets that we do not have as good a coverage of the earlier Sulphide years, before Angus Orchard arrived on the scene.

He actually has the longest service of all our current retirees, having joined the Sulphide Drawing Office Staff in 1945, prior to which he had eight years at Lysaghts in Newcastle.

Angus has also contributed significantly to company publications where his artist talents have proved a real boon to the company from time to time. This was especially so in the days of Greenleaf when Angus designed an excellent pamphlet which helped considerably in putting Greenleaf on the map. His design for the original Greenleaf plastic bag was also a very good contribution to fertilizer operations in those days.

In retirement Angus is expecting to catch up on all those activities and jobs which time has not permitted.

High Commissioner for Papua-New Guinea visits us



In mid-November we were pleased to have visit us the High Commissioner for Papua-New Guinea, His Excellency Mr Oala Oala-Rarua.

The High Commissioner was accompanied by his wife and son, also Miss Hanau Rarua and Mr. Ian Brooks, an administration officer from the Papua-New Guinea Office in Sydney.

The picture shows from left, Mr. J. W. Jolly, Miss Hanau Rarua, Mr. I. B. Brooks, Master Oala-Rarua, the High Commissioner, Mr. Oala Oala-Rarua, Mrs. Oala-Rarua and Mr. J. H. Kavanagh.

COCKLE CREEK NEWS



Published by Sulphide Corporation Pty. Limited
AM&S
 GROUP MEMBER

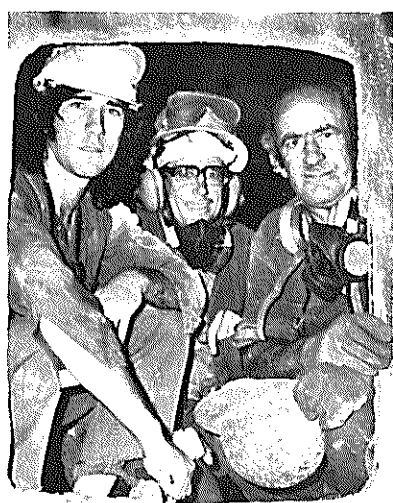
NEWS BREAK

Publication of the NEWS is to be discontinued in 1976 for a period which, it is hoped, will not be too lengthy.

This action has been brought about by the need for economies in the current business climate and, also, because of the retirement in February of Angus Orchard, who has been closely associated with the NEWS ever since its inception.

The NEWS has clearly made its mark locally. It began publication in April, 1951 and has now reached issue No. 264, a pretty good record for a company house publication. In a sense, it can be regarded as our oldest institution. It has outlived people, plants, company organisation structures, even such major events in Sulphide history as Greenleaf Fertilizers and the production of cement. As such it provides one of our best sources of company history and time spent perusing back issues can be most instructive and entertaining.

Although it is not possible to say exactly when publication will resume it is certainly intended at this stage that, as soon as more normal operating conditions prevail, the NEWS will take its place on the Cockle Creek scene once again.



Wayne Wade, Brian Jackaman and "Jock" Gibb are pictured here framed within a cut-out portion of the furnace shell. They were three of the team engaged for three weeks in jackhammering the I.S.F. shaft clean.

A Christmas Message from the General Manager, Mr. A. T. Thomson . . .

1975 was a year that will be remembered in Australia for a long time and one that will certainly go down in political history books. For Sulphide it was a year that made history of a different kind, and history that I sincerely hope will not repeat itself.

Demand for our products under the influence of a world wide recession was at a low ebb and at the same time we were beset by severe cost increases. It was necessary to introduce severe economies and we are now experiencing an unprecedented 12 week shutdown to bring production into line with demand. Without a doubt this is the most trying and difficult year that we have had to negotiate and I sincerely thank all employees for their efforts and cooperation which have enabled us to finish the year in reasonable shape.

Unfortunately 1976 will still present us with a difficult situation as the way back from the present recession will necessarily be a slow one.

The new Australian Government will try to stimulate industry again, but recovery will be slow and will depend on a real contribution from everyone.

At this stage I can only predict another hard year for Sulphide in 1976. The Smelter will definitely start up in February and will operate for the rest of the year, but sales predictions are poor and costs continue to rise. Looking on the bright side, however, in the adversity of 1975 we have come up with new levels of efficiency, safety and hygiene results have been excellent, we have progressed towards a means of preparing new furnace feeds

in briquette form and we have devised an efficient way of injecting oil into the furnace to reduce fuel costs.

There is every reason to believe that we can continue to make progress in 1976 and be ready to take advantage of the more buoyant period that now appears to be on the horizon. Sulphide is the biggest zinc smelter on the Australian mainland and plays an important role in the strategy of our parent Company, Australian Mining & Smelting Limited. We aim to keep it that way.

In conclusion may I thank you again for your efforts and may I extend to all Sulphiders and their families my best wishes for a Merry Christmas and a Happy New Year.

1975 Campaign shutdown almost complete . . .

By the time this NEWS reaches readers, the 1975 Campaign Shutdown will be virtually complete. Start-up will be in February and most of those who toiled in this shutdown will be on leave in January.

The shutdown was organised to meet the production/sales pattern of low demand which developed during 1975. The shutdown will extend from the beginning of November to the end of December — longer than normal — but organised this way for best overall economy in the current situation.

Compared with 1973 — the last shutdown — this "campaign" was notable for being largely concentrated on maintaining and replacing plant and equipment. Alterations and modifications were small by comparison. Nevertheless a very large amount of work was done; the cost is estimated to be of the order of \$3m, a similar figure to the maintenance programme in 1973.

This overhaul was also different from previous ones in that "D" Acid Unit received the most attention of all plants. This was to be expected; "D" Plant is now fifteen years old and the producer of 1,570,195 mono tonnes of sulphuric acid in this period.

- In "D" Plant major jobs were:
- Repacking Nos. 1 and 2 final drying towers and No. 3 wash tower (These constituted perhaps the biggest job of the shutdown and had never been done before)
 - Replacing the roof on No. 3 wash tower
 - Removing and screening catalyst from all passes
 - Replacing gas mains of the primary converter

— Overhaul of main blower and hot gas precipitator

In the Sinter Plant an important, if unspectacular, job was an electrical one — A rebuild of DC control gear allowing retirement of the M-G set. A rebuild of the sinter machine "hot sec-

tion" was carried out and, as usual, new rolls fitted to 70 crusher. The interior of the tip end scrubber stack was inspected and this required the installation of a very high scaffold inside the stack. The NEWS benefited from Works "aerial" pictures taken by
Continued page 2.



At around \$10 each, the four hundred 44-gallon drums needed to store catalyst from the various units at D Acid Plant could have represented a sizable cost to the department except for the co-operation of other sections of the Works who between them managed to supply enough to fill the bill. The picture spells out the gratitude for their assistance. At left is, Shift Foreman, Joe McDougall and, at right, Day Foreman, Jack Raw.

'75 Campaign Shutdown almost complete . . . (continued)

David Hoffmann after completing the long climb to the top. Thanks, Dave.

At the ISF rebuilds and/or replacements included:

- the eastern end of the furnace hearth
- about half the condenser hearth
- the furnace roof
- a new roof in the gas washing tower
- the auto hoist control cubicle.
- repairs to Cowper Stoves combustion chambers.

Although these lists are representative of the major jobs car-

ried out this year they do not, of course, give a total picture of the detailed planning and hard work which was done in very good time by the cleanout and maintenance teams involved.

Once again, therefore, the NEWS is glad to be able to record some details of this shutdown and pay a tribute to those who carried it out.

We hope that their efforts will be rewarded by some up-turn in business conditions and, hence, zinc sales in 1976. The plant will be in good shape to meet any such upturn.

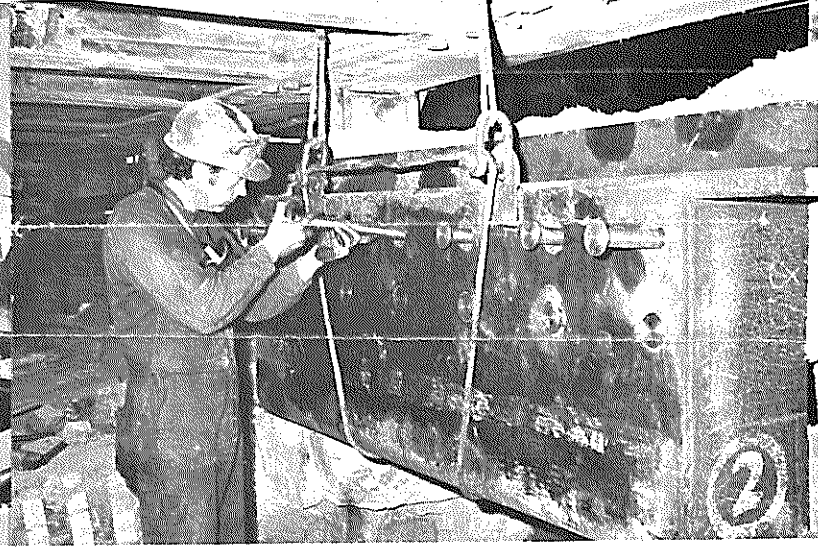
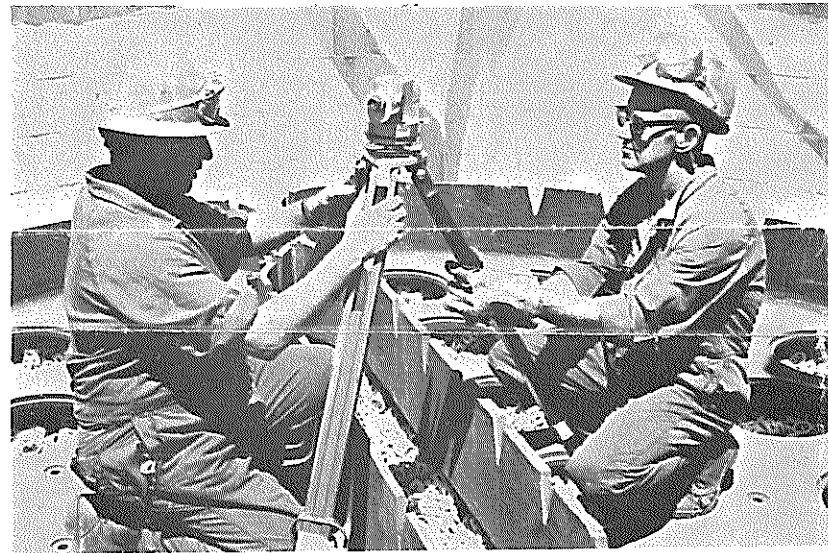


TOP RIGHT : Looking south-west towards Boolaroo from the top of the Sinter Plant stack. — Picture by David Hoffmann.

RIGHT : Electricians, Charlie Medcalf, Dave Arnold and Don Grant working on new electrical control gear for the Sinter Plant. Standing is Electrical Foreman, Les Payne.

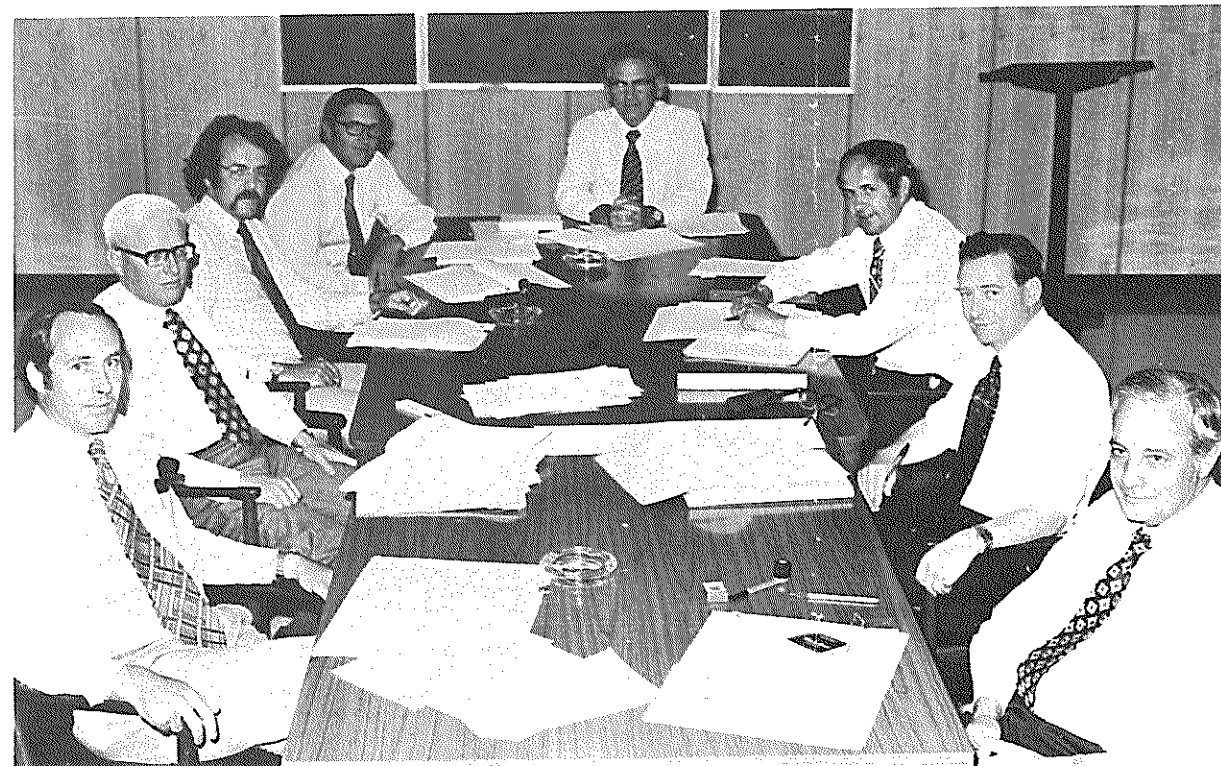


BOTTOM : (Left) Arnold Bullard and Len Jenkins in the process of levelling drying tower packing at D Acid Plant . . . (Right) Doug Herd fitting bolts to the condenser underflow baffle at the ISF.



Research Committee meets . . .

The second meeting of the AM&S Research Management Committee took place at Cockle Creek in November, following the inaugural meeting at Port Pirie in August. Pictured left to right round the Conference Room table are Messrs. B. Cusack (ZC/NBHC, Broken Hill), G. Firkin (Sulphide), M. Richmond (AM&S, Melbourne), P. Mead (Sulphide — Committee Secretary), A. Thomson (Sulphide — Committee Chairman), D. Ward (BHAS), R. Sellwood (CSL, Avonmouth) and M. Allman (CRA Research).



The Committee is concerned with Process/Production oriented research and will play an important role in identifying projects that are in the best interest of AM&S and determining where and how the work can be best undertaken. The Committee will also have the responsibility of coordinating research activity within the Group, controlling it broadly from an overall Group viewpoint and offering guidance on projects carried out at operating centres.

The Committee has undertaken the preparation of a long term research plan for AM&S which will evolve from a detailed examination of the research needs of the operating companies, taking into account the relevant aims and objectives of AM&S itself.