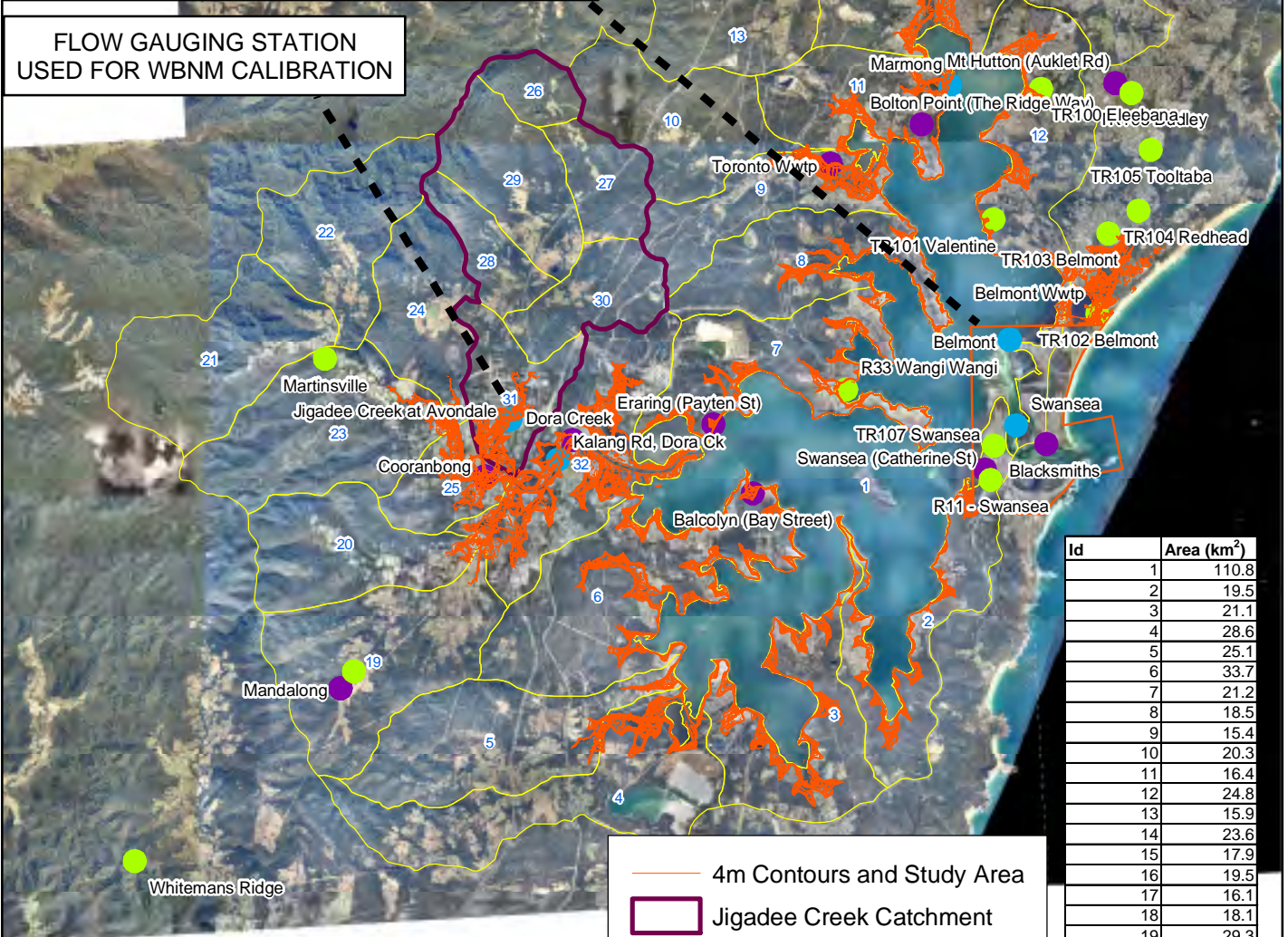


**FIGURE 1  
STUDY AREA**



**FLOW GAUGING STATION  
USED FOR WBNM CALIBRATION**



Id	Area (km <sup>2</sup> )
1	110.8
2	19.5
3	21.1
4	28.6
5	25.1
6	33.7
7	21.2
8	18.5
9	15.4
10	20.3
11	16.4
12	24.8
13	15.9
14	23.6
15	17.9
16	19.5
17	16.1
18	18.1
19	29.3
20	19.2
21	24.1
22	19.7
23	27.1
24	15.5
25	8.6
26	5.2
27	8.6
28	7.7
29	15.8
30	11.2
31	11.6
32	27.9
<b>Total:</b>	<b>697.8</b>

— 4m Contours and Study Area

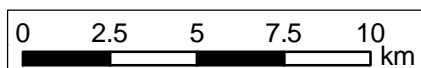
▭ Jigadee Creek Catchment

▭ Subcatchment

▭ Tuflow Model Extent

**Recorder**

- Daily
- Pluviometer
- Water Level



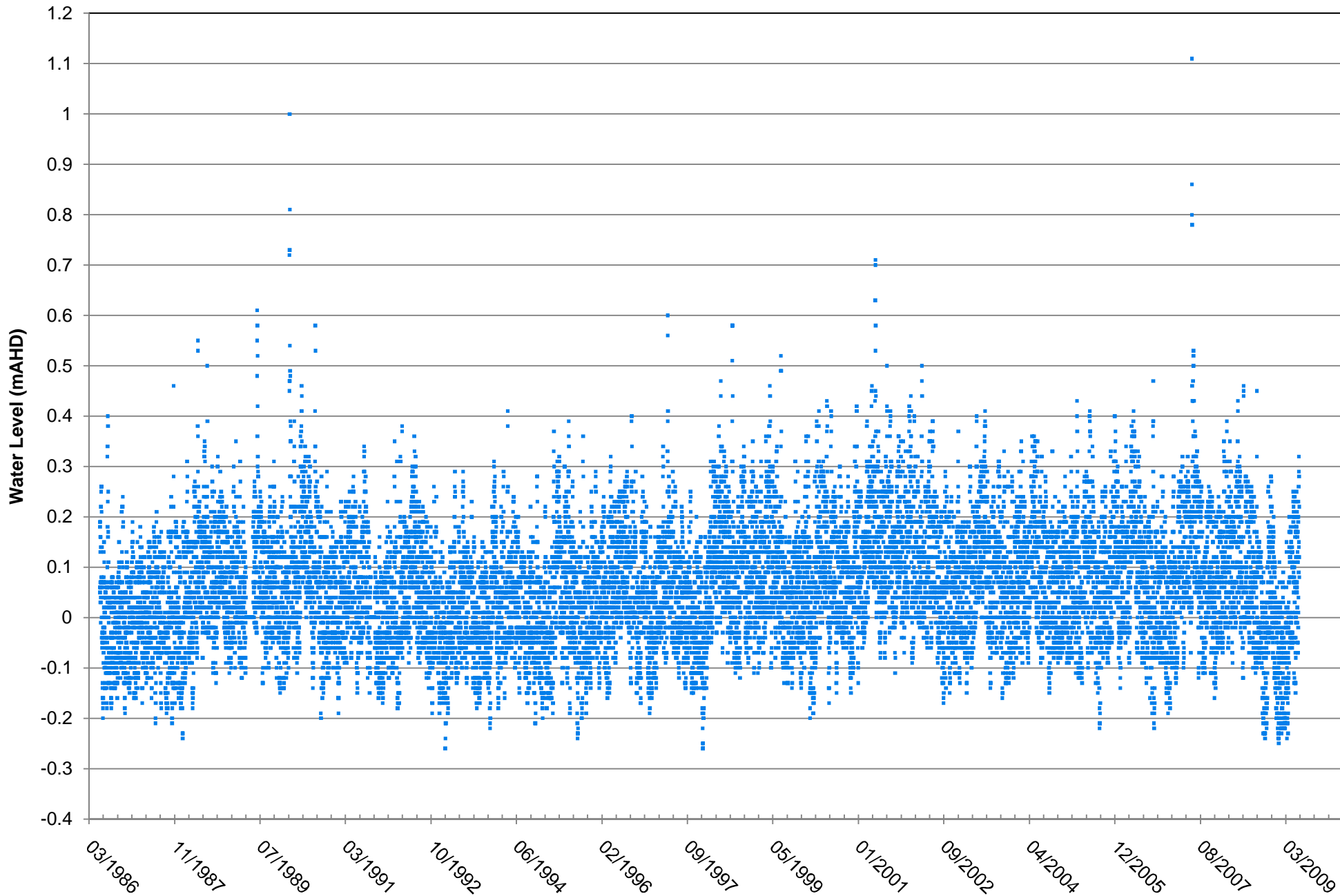


FIGURE 2  
WATER LEVELS  
MARMONG POINT

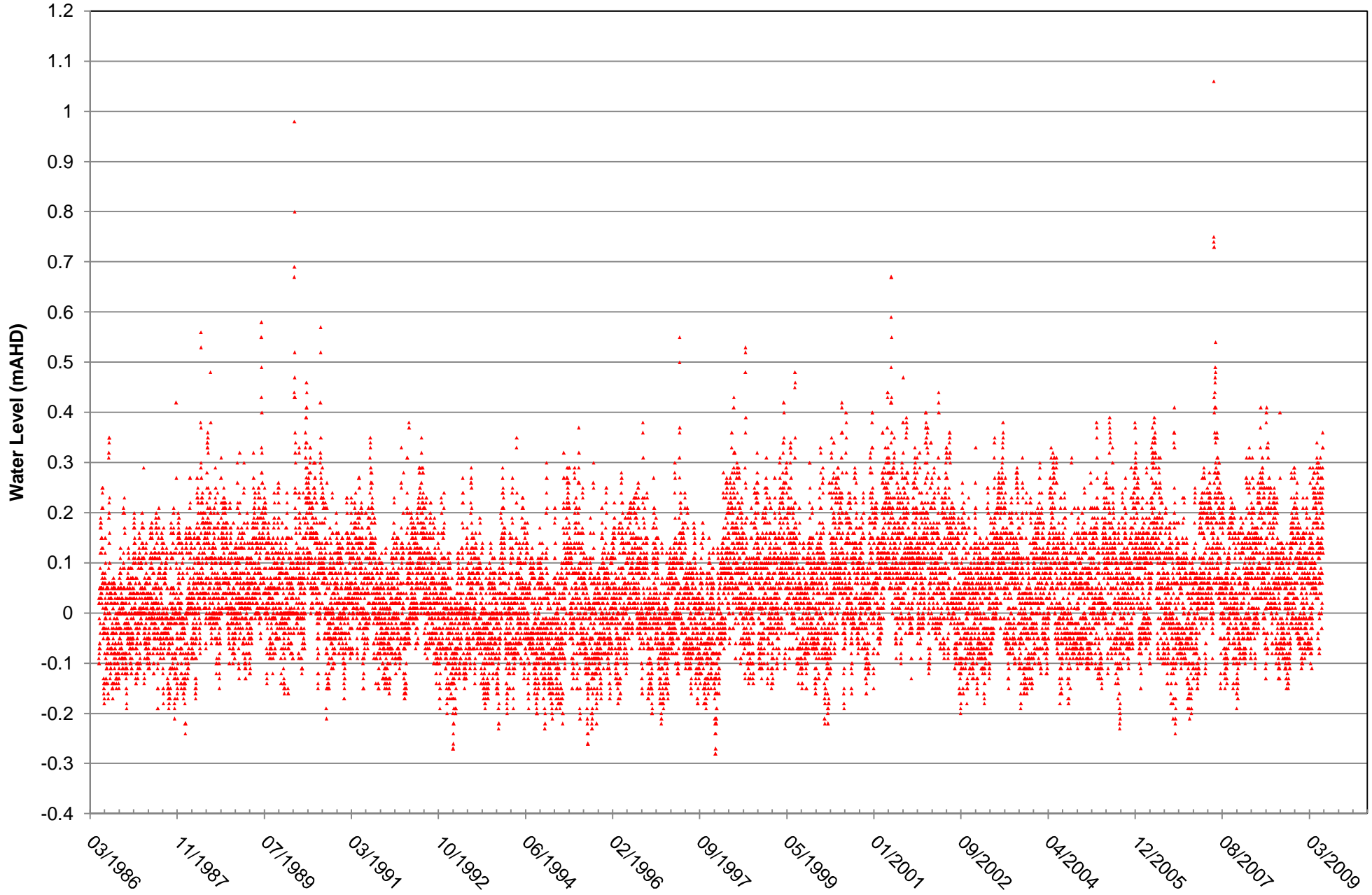


FIGURE 3  
WATER LEVELS  
BELMONT



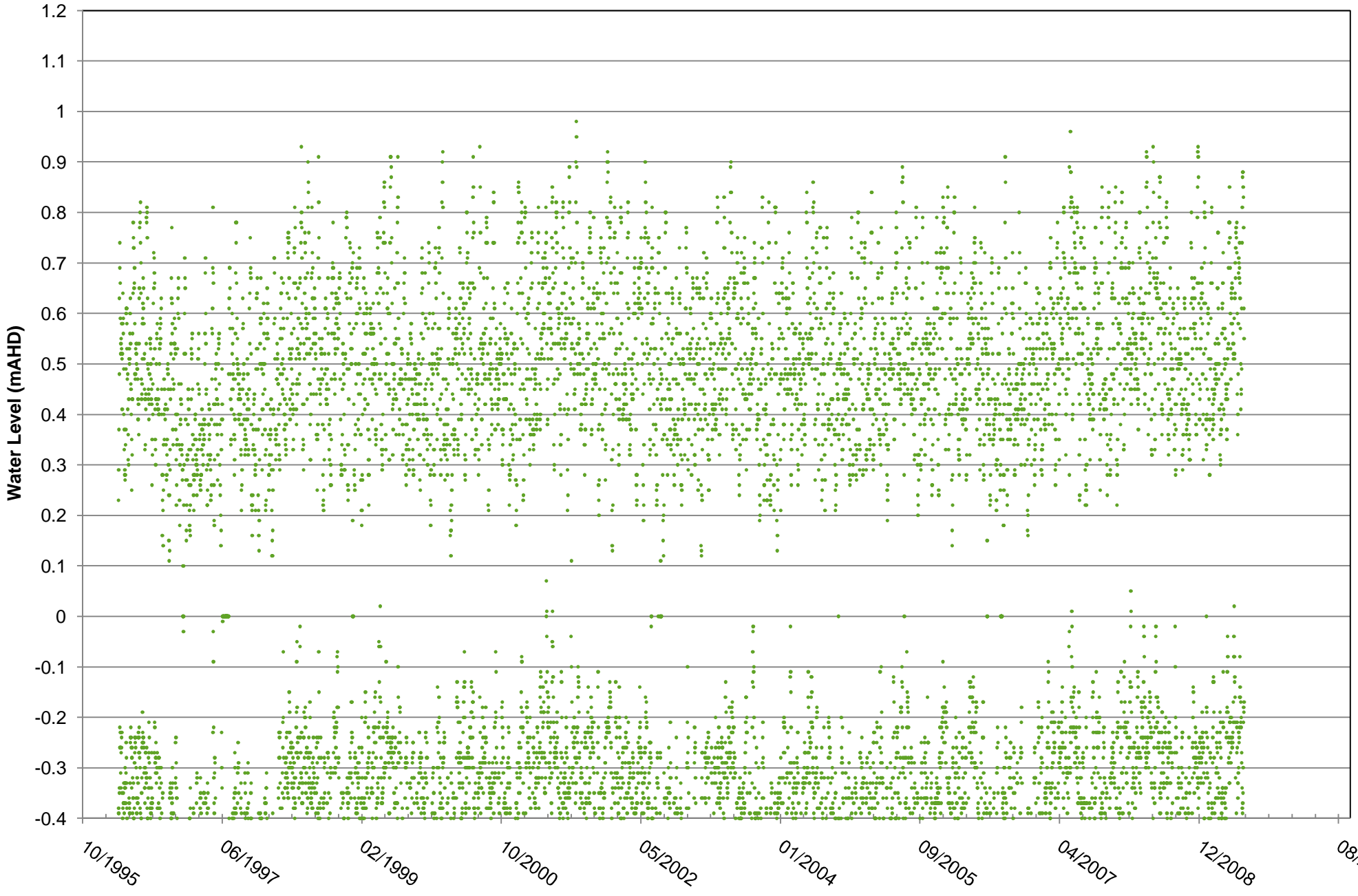
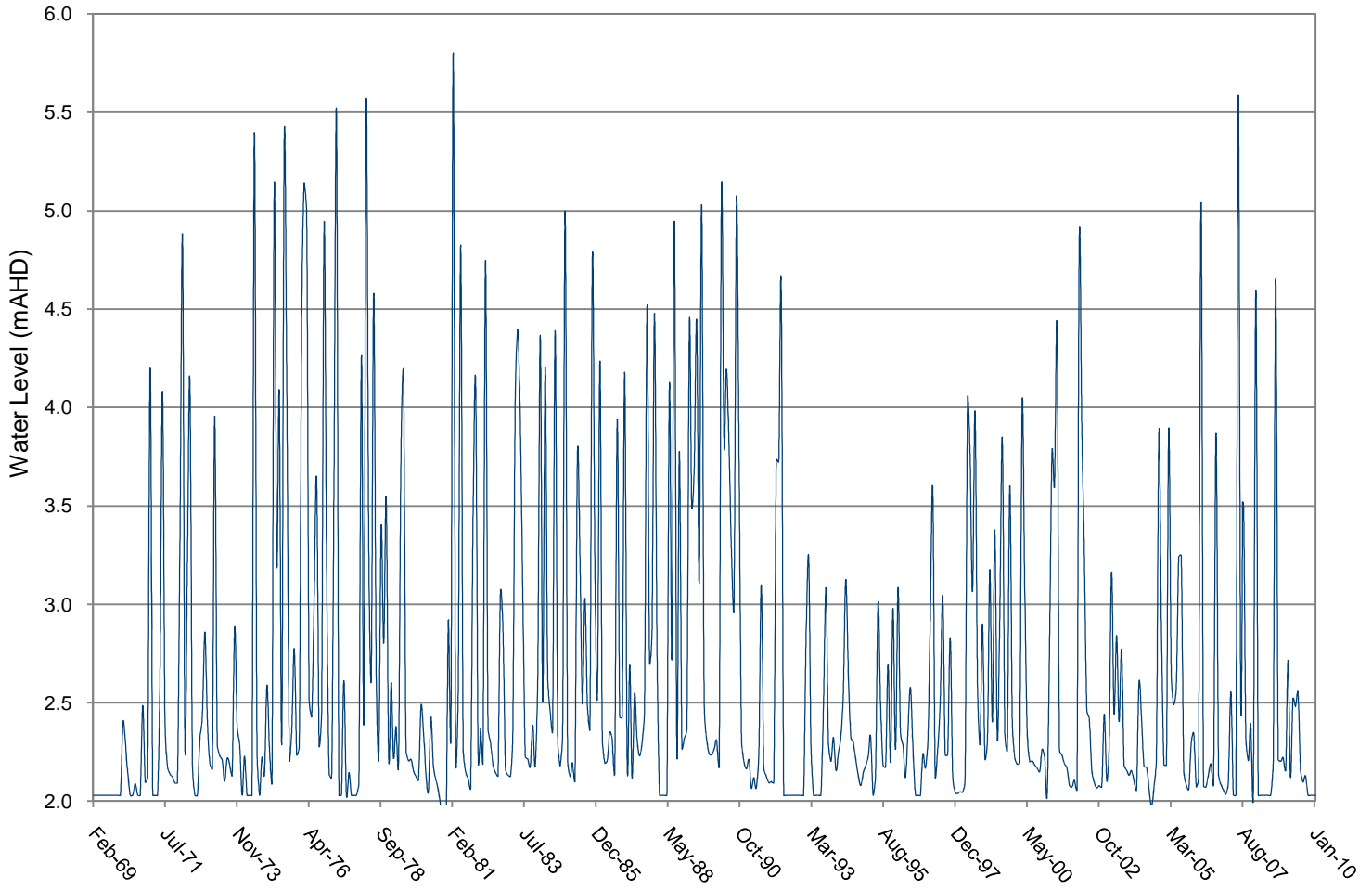


FIGURE 4  
WATER LEVELS  
SWANSEA

A: Daily Water Levels



B: Rating Curves

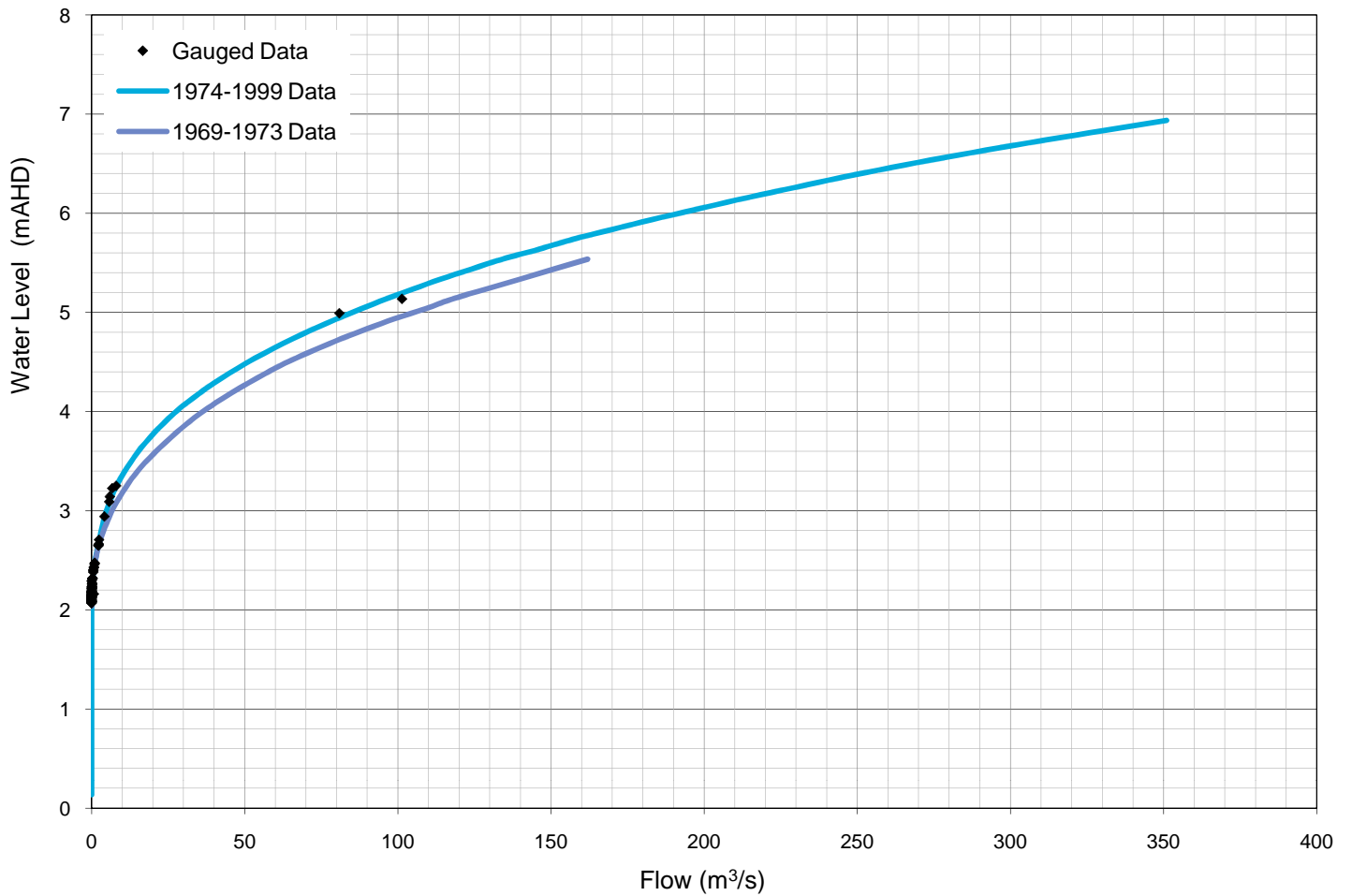


FIGURE 6  
WATER LEVELS  
FEBRUARY 1990

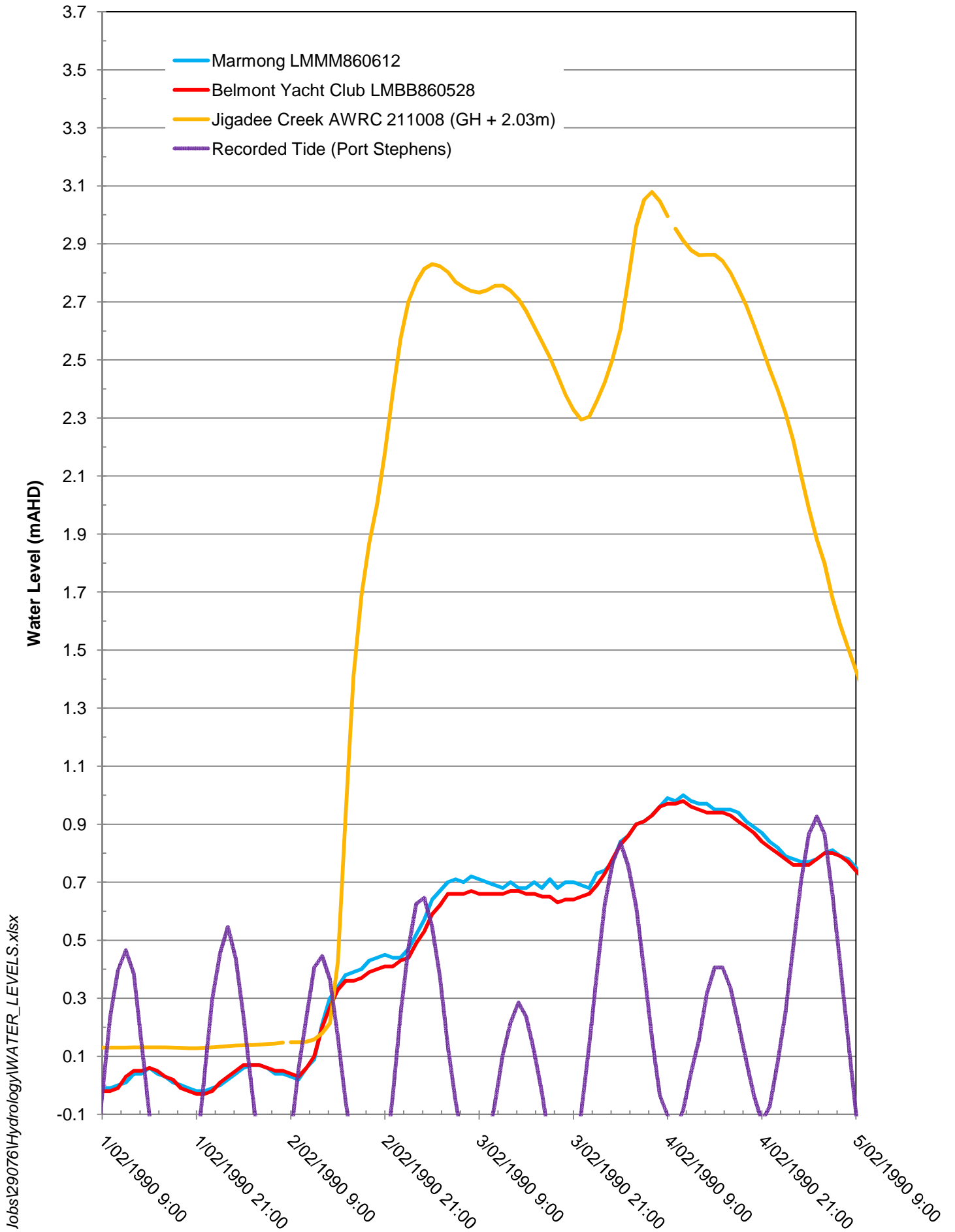
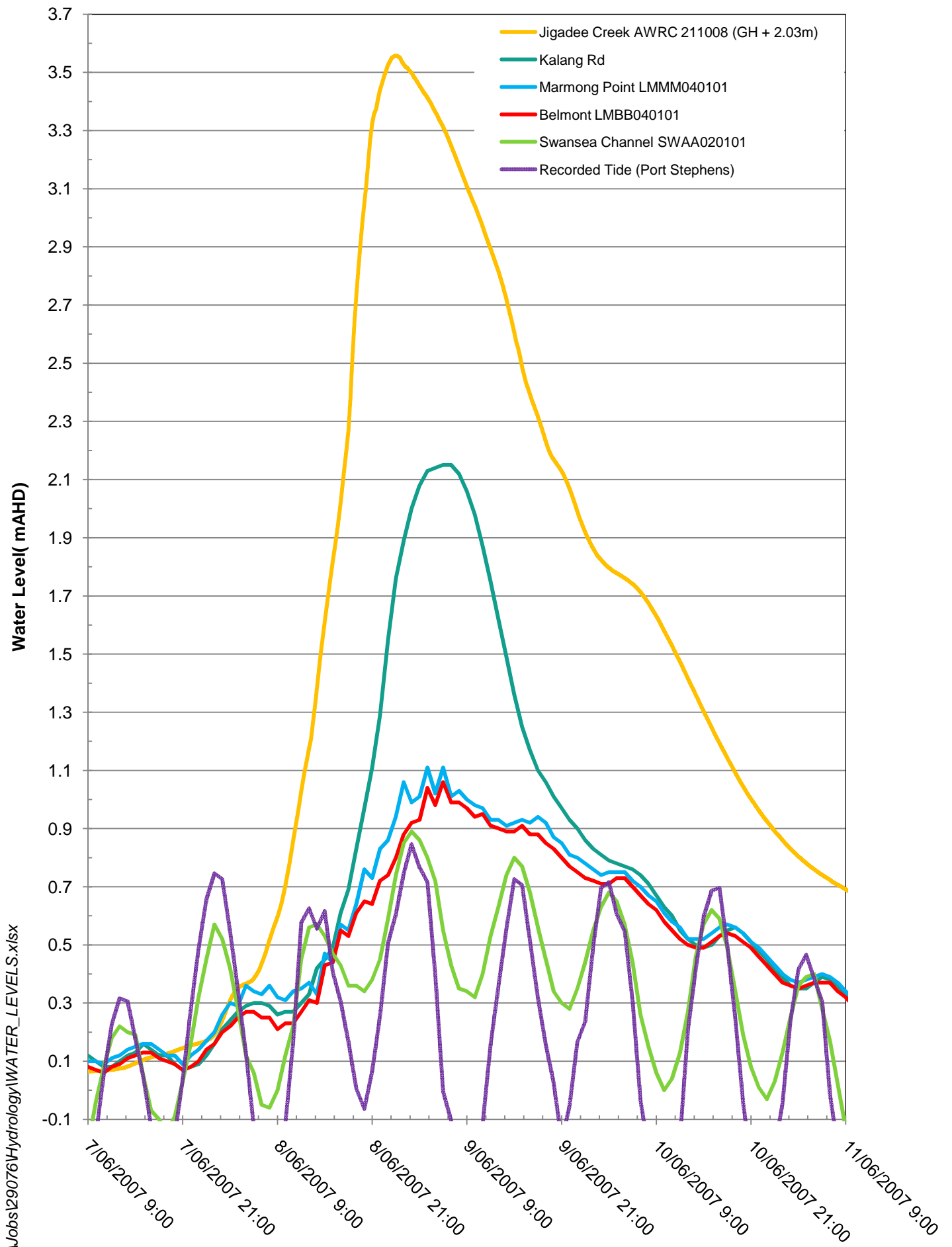
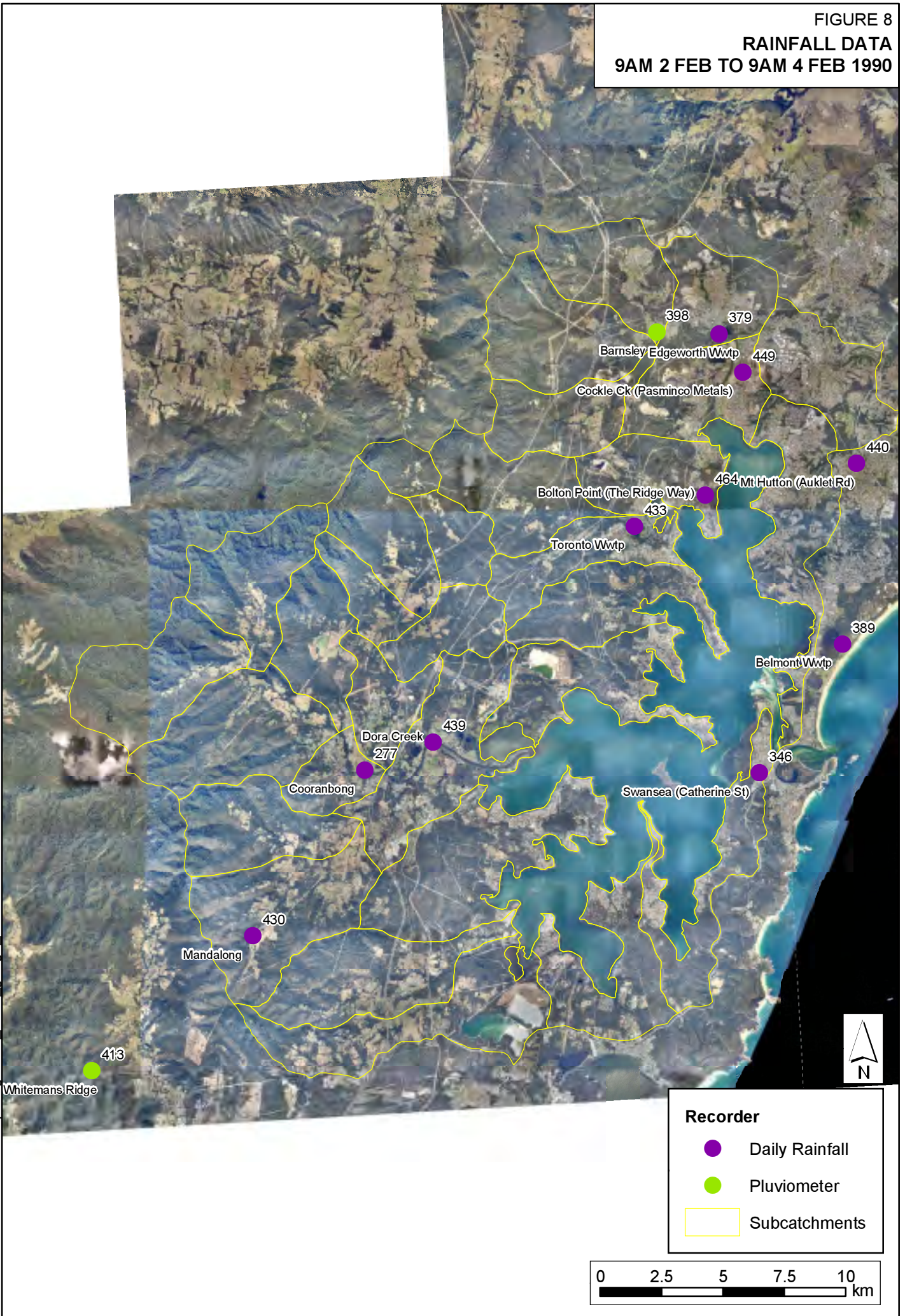


FIGURE 7  
WATER LEVELS  
JUNE 2007





**FIGURE 8**  
**RAINFALL DATA**  
**9AM 2 FEB TO 9AM 4 FEB 1990**



J:\Jobs\29076\Arcview\ArcMaps\Figure08\_1990\_gauge\_locations.mxd



Note: Daily rainfall gauge totals are read from 6-9 June 2007

FIGURE 9  
RAINFALL DATA  
4AM 7 JUNE TO 9AM 9 JUNE 2007

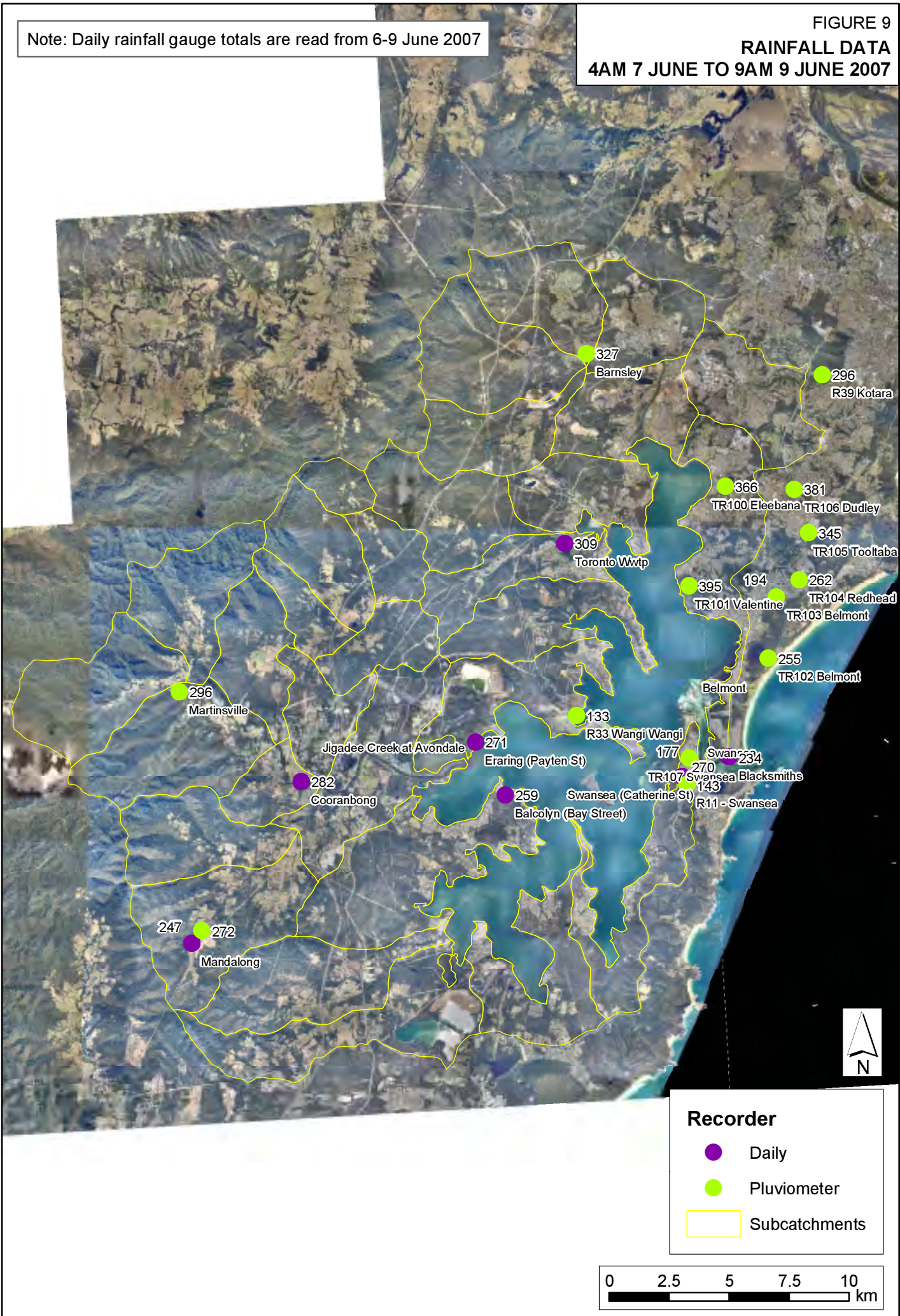


FIGURE 10  
CUMULATIVE RAINFALL  
2-4 FEBRUARY 1990

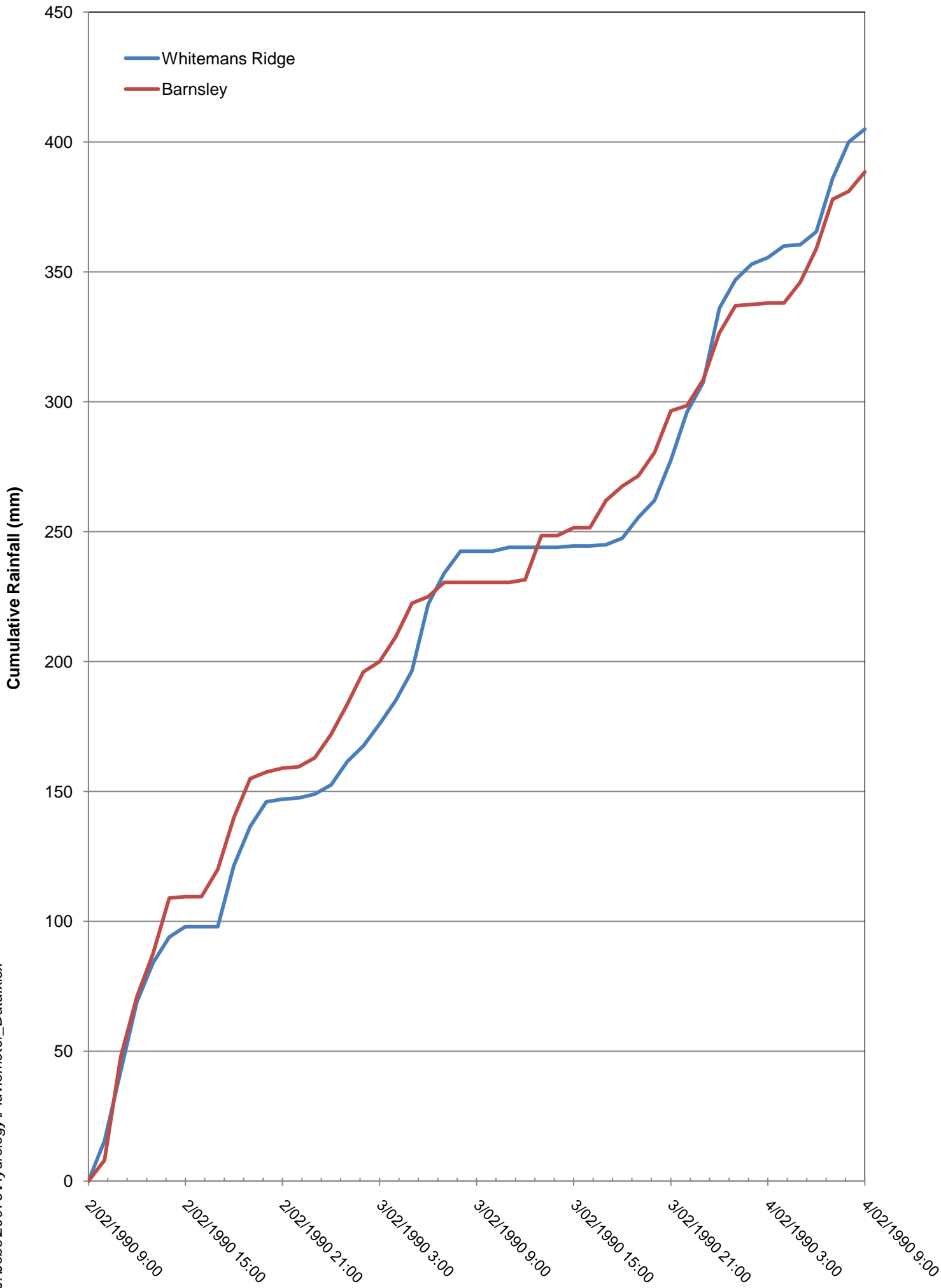
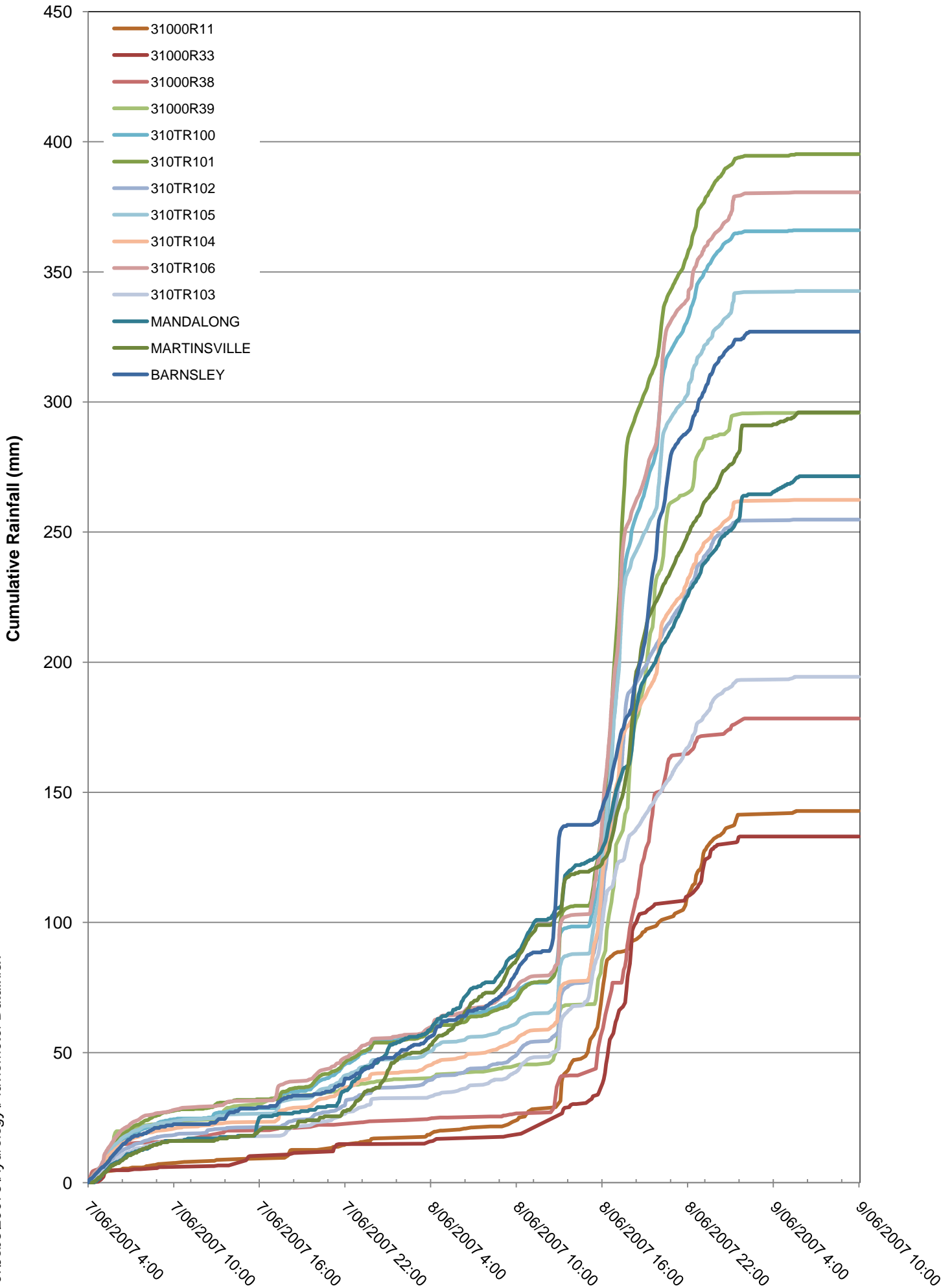


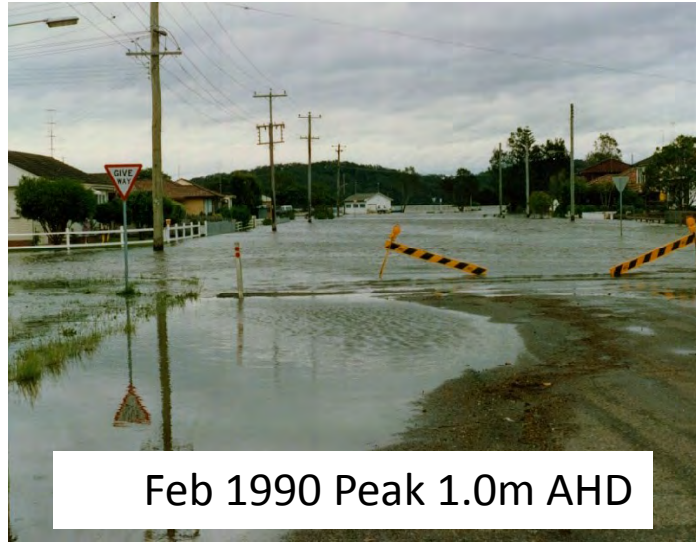
FIGURE 11  
CUMULATIVE RAINFALL  
7-9 JUNE 2007







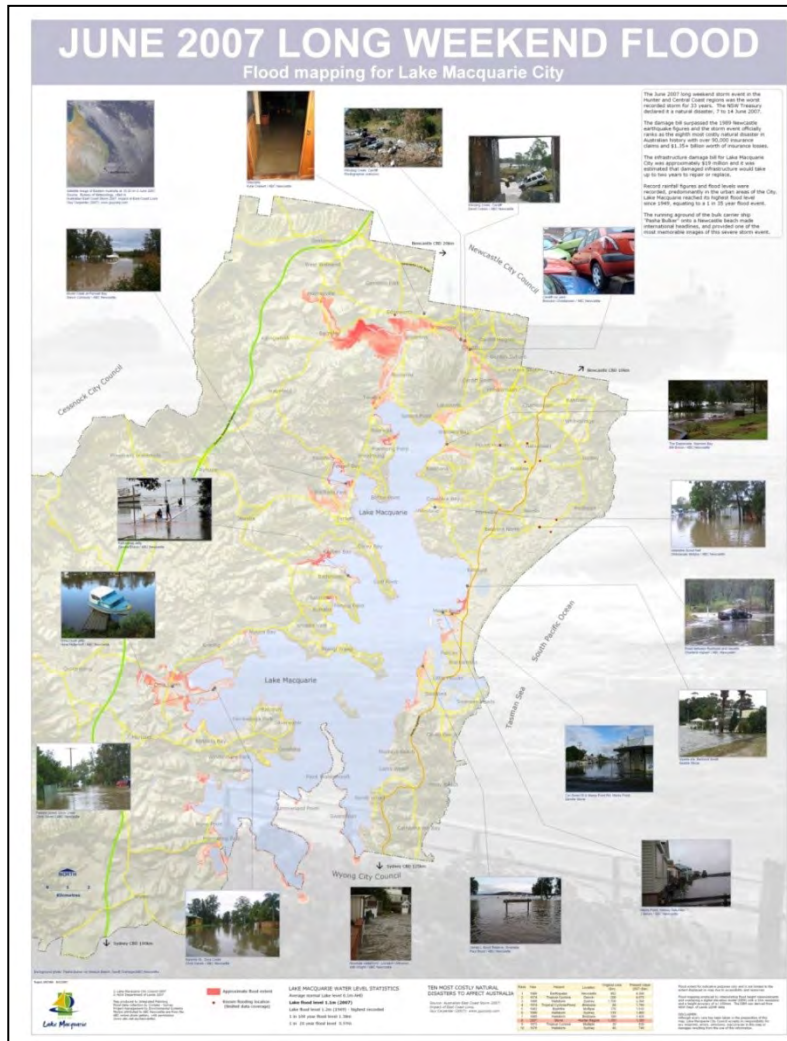
June 1949 Peak 1.25m AHD



Feb 1990 Peak 1.0m AHD



June 2007 Peak 1.05m AHD



June 2007

June 2007

June 1949

June 2007

June 1949

June 2007

Feb 1990

June 2007