



Cockle Creek News

Published in Boolaroo, N.S.W.
by SULPHIDE CORPORATION PTY. LIMITED

No. 57.

DECEMBER, 1955.

POTTED BIOGRAPHIES

HARRIE J. WILSON

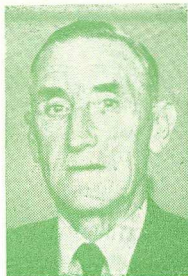
Born in Cardiff 32 years ago, Wizzy, as he is better known, completed his schooling at Cardiff Primary and Newcastle Boys' High. On finishing fourth year became apprenticed as an electrical fitter to the B.H.P. and continued five years with them after completing his indentures.

Now in sixth year at Sulphide, Wizzy has worked as shift electrician in the switch room and lately as an electrical fitter on day-work. He was chosen for six months training as a foreman and was successful in his studies at Newcastle Technical College—he still attends, doing the Supervision Course.

His sporting activities were many; soccer, tennis, swimming, rugby league and surf clubs have all received his enthusiastic support.

Secretary-treasurer of the Sulphide Fishing Club and a member of the management committee of the Welfare Club, he has given a lot of time to club activities. The last two years proved him to be a capable announcer and a great help at the Work's Picnic.

In 1946, Wizzy married Neola Allan of Broadmeadow and set up house in Cardiff—the house demonstrates his capabilities in the building game. Two children, Graeme aged 8 and Suzan 2 years, are their parents' joy. Trim lawns and flower beds are so precise that we wonder how he manages to get it all done, let alone make time for occasional tours in the V-8 in search of the elusive fish.



WILLIAM H. WADSWORTH

Coming from a Lancashire family, young Wadsworth moved to South Wales upon his father's appointment as Works Manager, Britonferry Chemical Co. Educated at Coedffranc, Neath and Gowerton, Secondary High Schools, and the famed metallurgical centre, Swansea, where he gained his Diploma in Engineering and Building Construction at Swansea College. Followed this with research into mechanical limitations of lead, and then 6 years at Pontardulais Chemical Co. to obtain operating experience, thus following family tradition (going back over 100 years) by entering the chemical process industry.

Joined National Smelting Co. Swansea Vale in 1924 as Constructional Engineer and appointed Assist. Works Engineer four years later. Transferred to Avonmouth in '37 on acid plant construction, he commissioned chamber plants at Newport and Pontardawe the following year.

At the end of hostilities, Mr. Wadsworth spent 18 months with the Control Commission in Germany where he 'activated' approx. 190 industries—some from almost rubble. Back to Avonmouth in 1947, he assisted Group's Chief Engineer in construction of an anhydrous hydrofluoric plant on behalf of the Government Supt. of fluorine production in 1948; Assist. Works Engineer—Chemical Processes 1949; Deputy Works Engineer, Swansea Vale 1950.

Visited Cockle Creek in 1951 as consultant for our new acid plant and superphosphate plants; then in '53 Mr. Wadsworth returned as our Chief Supt. Production. Enjoys a game of golf, and along with Mrs. Wadsworth and daughter, Frances, has settled down to our ways of life.

May Xmas shed its radiant light around
And festive cheer and happiness abound