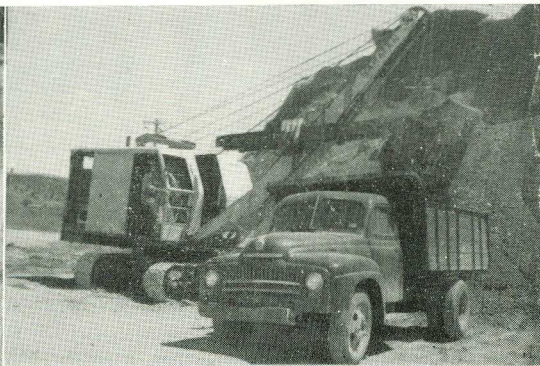


SULPHIDE

ITS WORK AND ITS WORKERS



PHOSPHATE ROCK DUMP REMOVAL

Recent months have seen the removal of one of Sulphide's outstanding landmarks of recent years. This was the phosphate rock outside storage dump, which had grown until it formed a dominating feature of the Works topography south of "C" Acid Plant.

The heap of phos. rock, which at 29/10/56 contained a total of 82,985 tons, had to be removed in order to make way for proposed works extensions.

Effected smoothly and without inconvenience, the transfer was greatly

accelerated in the period August/November, 1957, when by far the greater portion was removed. It was carried out by mechanical shovels loading the material into contractors' lorries and Works dump cars and transported either into the phos. rock storage shed or to a new outside dump on the eastern side of the Works.

A general view of the operation in progress is shown on the left, whilst on the right, Henry Hodgson in the Harman shovel is loading one of the lorries.

A HISTORY OF SPEER'S POINT — Continued

"C" RIDING: Councillors, W. N. T. Dunne, G. Durie, C. A. W. Evans, W. R. Wilson.

President: Cr. T. R. Pendlebury.

Deputy President: Cr. C. A. W. Evans.

The principal officers are: Shire Clerk: Mr. T. H. Halton, Shire Engineer, Mr. J. W. Webb and Shire Health Inspector, Mr. C. Ray.

Although Speer's Point has progressed in settlement over the years, it was not until the end of the second World War, and also the removal of building controls, that building activity became rather extensive consequent upon the extension of industries in the Newcastle district. In fact at the present time very few vacant blocks are available for sale, all suitable land for residential purposes having been subdivided and sold.