

HOLIDAYS

On a recent vacation, two of our number in the persons of Jim Scarfe and Bryn Davies crowded 3,600 miles of travel, 2 days in Broken Hill, 13 days in Adelaide and 2 days in Melbourne, into three weeks annual leave, and enjoyed every moment of it.

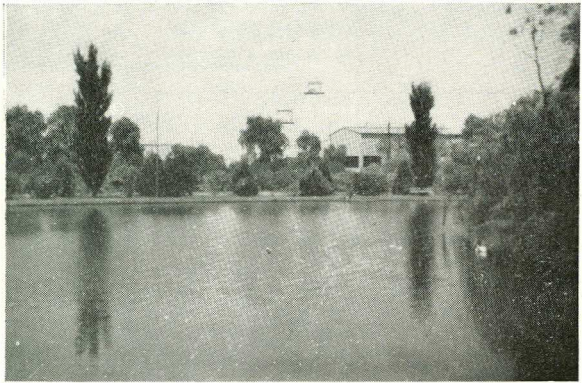
We give the details of their itinerary and some comment on conditions and happenings on the way. Perhaps remarks concerning South Australia can be regarded with some suspicion seeing that J. S. is a "crow-eater" by birth and B. D. as a passenger in Jim's car could no less than acquiesce to his enthusiasms. We did hear of it almost being necessary to "kow-tow" three times per sunset in the direction of the south and in memory of Colonel Light. Anyhow, here are some extracts from their extensive diaries, compiled for us by Bryn Davies.

To make the most of the vacation we set out on our journey directly after work on the Friday and travelled to Mount Victoria, 170 miles distant where we had previously booked a cabin for the night. The cabin idea enabled us to conserve time by leaving at our convenience on Saturday morning. After breakfasting at Bathurst, inter-changing of drivers saw a comfortable 50 m.p.h. average maintained and the town of Cobar was reached in time for dinner that evening.

In passing through Bathurst, Orange and Wellington on the way, the obvious prosperity of these places was impressed upon us, with their crowds of Saturday shoppers filling the streets and parking space at a premium.

As we travelled further westward the effects of the drought conditions prevailing became more noticeable. The surrounding countryside taking on a drier appearance and the previous greenness being replaced with chocolate-brown soil and dry foliage.

Our stay at Cobar left us with no ambition to acquire shares in any



The artificial lake, Zinc Corporation, Broken Hill.

section of this township. Its days of glory appear to have departed forever — although evidence of past mining activities remain to point out that Cobar has played its part in the development of N.S.W. A walk through the town showed that the shopping centre is very much out-moded.

In a corrugated iron shed about 18 feet by 30 feet were housed the town's two electricity generating sets, which, powered by a couple of diesels gave a total output of 280 KW. A train load of water tankers arrived whilst we were there, this water being supplied by the Government during the drought. In the face of this, we were later surprised to find that the modern hotel had no water

(Continued on page 10)