

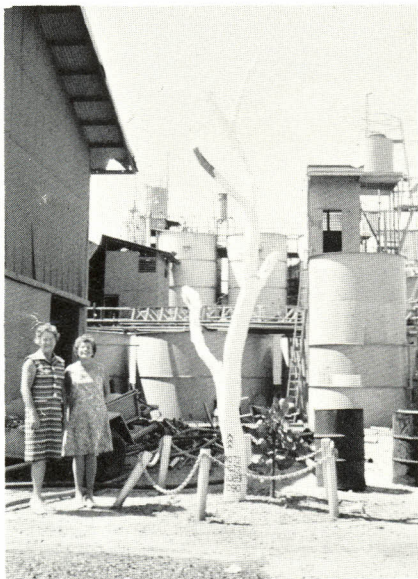


CENTRALIAN SAFARI (Continued)

There are no services, and solar still water is purchased at \$1.80 per 44 gallon drum. Each "house" has its generator either wind or diesel driven. It's wonderful how much shower you can get out of 1½ gallons of warm water when its so dear.

I celebrated my birthday in Alladins Cave, mine host cracking a bottle of "bubbly" for me.

The run to Port Augusta and civilisation, was made through countryside covered in grass and flowers. We can honestly say that at no time did we see true desert. A quick run out to Whyalla, and a pleasant trip through the lower Flinders Range brought us to



Adelaide where we spent a week before returning home after a trouble free safari. The people we met on our trip who did have troubles were almost all driving overloaded cars. Some could have lived for weeks on the unnecessary stores carried. 150 miles was the longest distance between petrol supplies, and most supplies were not excessively priced. Motels varied in quality, but no difficulty was experienced in getting accommodation.

TOP : Ayers Rock, with the camp used by Safari Tours in the foreground.

ABOVE LEFT : One of the hundreds of bas-relief sculptures at Pichi Richi, Alice Springs, carried out by William Ricketts, who is portrayed in the centre of this group.

ABOVE RIGHT : The original mining lease at Rum Jungle was marked by a blaze on this ironwood tree which is almost indestructible.