

## ...WEDDING...



Joanne Snodgrass, Trainee Library Officer from the Planning and Technology Department, married Tim Forsyth at the St. Mary Immaculate Church, Charlestown on 10 December, 1983.

After a weeks honeymoon at Surfers Paradise Joanne and Tim are now living at Cardiff.

At a gathering in the Library on the day prior to her wedding, Joanne was presented with a Japanese urn from her workmates.

## ORGANISATIONAL DEVELOPMENT Brings a new editor to the News...

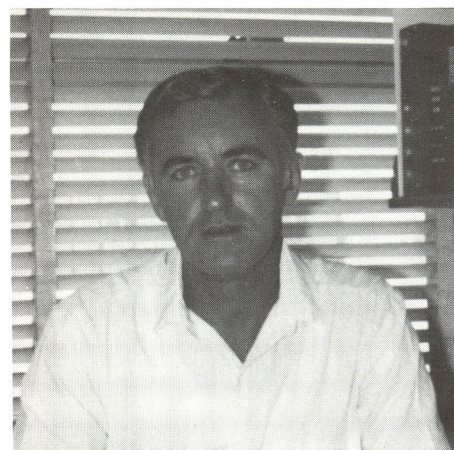
ORGANISATIONAL DEVELOPMENT (OD) has made many significant changes to the staff here at Sulphide, including the amalgamation of the Chief Engineers' and Maintenance Engineering Departments into one Engineering Department.

This amalgamation, coupled with changes in Personnel Department staffing, brings me from my former position of 17 years as Technical Officer in the Drawing Office, to be Personnel Services Officer with the Personnel Department commencing 1 February this year.

One of the accountabilities of this position is the preparation each quarter of the Cockle Creek News and it is an unforeseen pleasure that allows me to return one of my favourite articles the **"Potted Biographies"** section to our publication.

May I take this opportunity to enlist the help of all employees, especially those on the plant whom I don't know as well, to pass on to me snippets of news that may allow for a wider coverage of activities to be reported.

While I cannot guarantee publication of all information supplied I assure you that your involvement will be greatly appreciated.



Neville Irwin.

## COCKLE CREEK NEWS

Sulphide Corporation Pty. Limited

P.O. Box 42

Boolaroo NSW 2284

Editor: **Neville Irwin**

Ph. 58 1241 - Ext. 288



## SAFETY NEWS

### HINTS ON CARRYING...

- Do not try to carry any object until you are satisfied that your grip is comfortable and secure.
- Have a look at the path you intend to take. Check for obstructions that may be a danger.
- Do not carry any object that will completely obscure your view.
- Carrying long lengths of material is particularly dangerous and all care should be taken. When approaching corners carry long lengths so that the front is higher than a man's head.
- Be careful of fouling live wires and in a crowded or busy area, use two men to carry long lengths.
- In turning a sharp corner in a crowded area, hold the long length across your body so you can watch both ends as it swings around.
- Any containers used for loose objects should be sound and have a bottom strong enough to hold the weight of the contents.
- Sharp implements, such as shovels, spades, etc. should not be carried over the shoulder, but by the side, with the hand placed as near as possible to the cutting edge.

### LOST TIME INJURIES

Department	Jan.	Feb.	Mar.	April	May	June	July	Aug.	Sep.	Oct.	Nov.	Dec.
PRODUCTION	NIL	NIL										
ENGINEERING	2	4										
SERVICES	1	2										
PROGRESSIVE TOTALS 1984	3	9										
PROGRESSIVE TOTALS 1983	5	10	18	21	24	28	32	34	40	48	51	53