

# PRINCIPAL PLEASURE RESORTS IN

## UNRIVALLED FOR YOUR HOLIDAYS

Brief particulars of the chief pleasure resorts on the foreshores of the Lake are given hereunder, together with directions as to the best means of reaching same.

**TORONTO:** Distant 16 miles from Newcastle, 105½ miles from Sydney by road. To reach Toronto from Sydney, travel by Sydney-Newcastle train to Fassifern, where a branch-line train to Toronto will connect. Through train service from Newcastle to Toronto.

**Toronto** is one of the premier resorts of the Lake and is a very progressive town, and the headquarters of the Royal Motor Yacht Club which stages attractive displays on the Lake.

**Facilities Available:** Good shopping centre; swimming baths; water supply; boats for hire; bowling green, tennis courts; excellent fishing grounds.

**Accommodation:** Toronto Hotel (tariff on application); "Morella" Guest House; and other boarding houses.

**BLACKALLS:** Distant 1 mile from Toronto—noted for its Picnic Ground, a pleasantly wooded peninsula with Dance Pavilion, Jetty, and conveniences.

**BELMONT:** Distant 15 miles from Newcastle, 93 miles from Sydney, on the Pacific Highway. To reach Belmont from Sydney, travel by Sydney-Newcastle train to Broadmeadow, then connect with either branch-line train to Belmont, or 'Bus (No. 323). Belmont is an attractive town and is the headquarters of the Lake Macquarie Yacht Club, which has a fine fleet of yachts and sailing boats.

**Facilities Available:** Good shopping centre; enclosed swimming area; dressing sheds; boats for hire; bowling green; tennis courts; good fishing grounds.

**Accommodation:** Hotel Gunyah (tariff on application).

**MARK'S POINT:** Distant 2 miles south of Belmont. Heights command fine view of the Lake. Regular 'bus service (No. 323).

**Facilities Available:** Fishing; shopping centre; reticulated water supply; sanitary conveniences; boats for hire.

**SWANSEA:** Distant 19 miles from Newcastle, 89 miles from Sydney, on the Pacific Highway. At this point the Lake connects with the Pacific Ocean by means of a navigable channel. To reach Swansea, proceed to Broadmeadow or Newcastle by train and connect with 'Bus No. 323.

**Facilities Available:** Good shopping centre; boats for hire, swimming in Lake (unenclosed); Ocean Beach (Blacksmiths and Caves Beaches); natural rock pools; splendid fishing grounds on Lake, channel, beach, or deep sea.

**Accommodation:** Hotel Swansea.

**BLACKSMITHS, PELICAN FLAT, SWAN BAY:** Three attractive tourist resorts situated between Belmont and Swansea, on Lake foreshores. Served by 'Bus No. 323. Splendid shallow swimming areas for children; deeper zones for adults. Boats for hire; excellent Lake or Beach fishing. Good surfing beach at Blacksmiths.

**SPEER'S POINT:** Distant 12 miles from Newcastle, 100 miles from Sydney. Headquarters of Shire Council. Regular 'bus service from Newcastle (Nos. 334 or 327). To reach Speer's Point by train, proceed to Cockle Creek, thence by connecting 'bus to Speer's Point.

**Facilities Available:** Concrete floodlit swimming baths; dressing sheds; sanitary conveniences; reticulated water supply; boats for hire; good fishing grounds; bowling green; 18-hole golf course (at Cockle Creek); cricket ground; tennis courts.

**Accommodation:** Hotel Speer's Point (tariff on application); Guest House, tariff on application.

**WARNER'S BAY:** Distant 2 miles from Speer's Point, on Main Road along Lake foreshores. Good 'bus service from Newcastle (No. 327).

**Facilities Available:** Good swimming area (unenclosed); dressing sheds; reticulated water supply; shops; boats for hire.



Toronto Railway Station. Hotel and Bowling Green in Foreground.



Belmont with Picturesque Redhead in the Background.



Approach to Lake Macquarie at Swansea, with Redhead Beach in the background.

## THE LAKE MACQUARIE SHIRE

**WANGI WANGI, ARCADIA, LAKEVIEW, RATH-MINES:** Distant 99½ miles from Sydney, 23½ miles from Newcastle, 7½ miles from Toronto. Good bus service from Toronto to Wangi. Splendid picnic, camping and holiday resorts.

**Facilities Available:** Good swimming baths; dressing sheds; sanitary conveniences; shops; boats for hire; splendid fishing grounds.

### MOTOR CAMPS IN THE SHIRE AREA

1. **Speer's Point. LAKE MACQUARIE PARK.** Distant 12 miles from Newcastle and 100 miles from Sydney. Facilities available include concrete swimming baths (floodlit); reticulated water supply; seats and tables; electric lights; sanitary conveniences; refreshment rooms where all essential commodities are obtainable. Caretaker arranges camp sites. Charge 12/6 per site per week.

2. **SOUTH BELMONT PARK,** near Belmont. Distant 15½ miles from Newcastle, 92½ miles from Sydney. Facilities available include reticulated water supply; sanitary conveniences; electric light; refreshment kiosk where essential commodities may be obtained; unenclosed swimming areas; fireplaces, seats. Caretaker arranges camp sites. Charge £1 per week.

3. **WARNER'S BAY:** Situated near Main Road, 13 miles from Newcastle, 98 miles from Sydney. Facilities available include unenclosed bathing area; dressing sheds; showers; reticulated water supply; sanitary conveniences. Shops adjacent. Private.

4. **SWANSEA:** North of Wallarah Street. Distant 19 miles from Newcastle, 89 miles from Sydney. Facilities available include reticulated water supply; sanitary conveniences; natural rock-enclosed bathing place. Shops adjacent. Camping charge 10/- per week; 1/- per night.

5. **CAVES BEACH:** Road turns off at southern end of Swansea. Distant 20½ miles from Newcastle, 89½ miles from Sydney. Facilities available include tank water supply; sanitary conveniences; Ocean Beach; refreshment kiosk open at week-ends. No charge.

6. **NORD'S WHARF.** Road turns off Highway 4½ miles south of Swansea. Very attractive resort; swimming baths; sanitary conveniences; tank water supply; store where essential commodities may be obtained. No charge.

7. **WANGI WANGI.** Distant 23½ miles from Newcastle, 99½ miles from Sydney. Facilities available include tank water supply; concrete swimming baths; dressing sheds; sanitary conveniences. Shops adjacent. Charge 10/- per week.

8. **MOUNT SUGARLOAF.** Distant 4 miles from West Wallsend, 17½ miles from Newcastle, and 118½ miles from Sydney. Excellent road to camping area which is near summit of mountain.

9. **REDHEAD:** Near Ocean Beach. 10½ miles from Newcastle, 97½ miles from Sydney. Excellent surfing beach; sanitary conveniences; water supply; dressing sheds. Shops adjacent.

10. **TORONTO:** Goffet Park. Central to town; every convenience including water supply, sanitation; shops. Handy to swimming baths; boats for hire. Charge 10/- per week. Also Yarral Reserve, Gurrumba Park.

11. **COAL POINT:** Wippi Reserve.

• The charges for camping are those in operation at 9/2/53, and may be reviewed from time to time by Council.

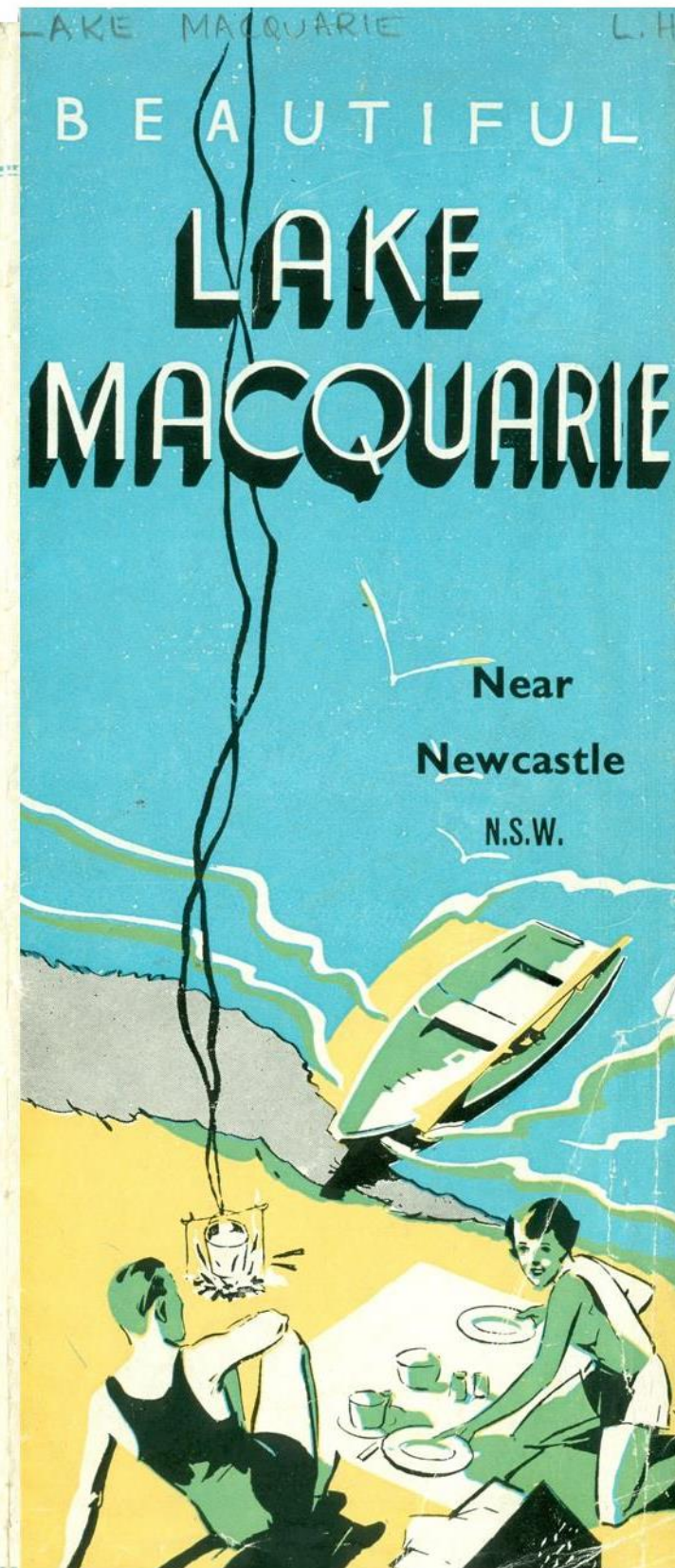
### BEWARE !

The entire Lake district is a sanctuary for natural Fauna and Flora—yours to enjoy—not to destroy.

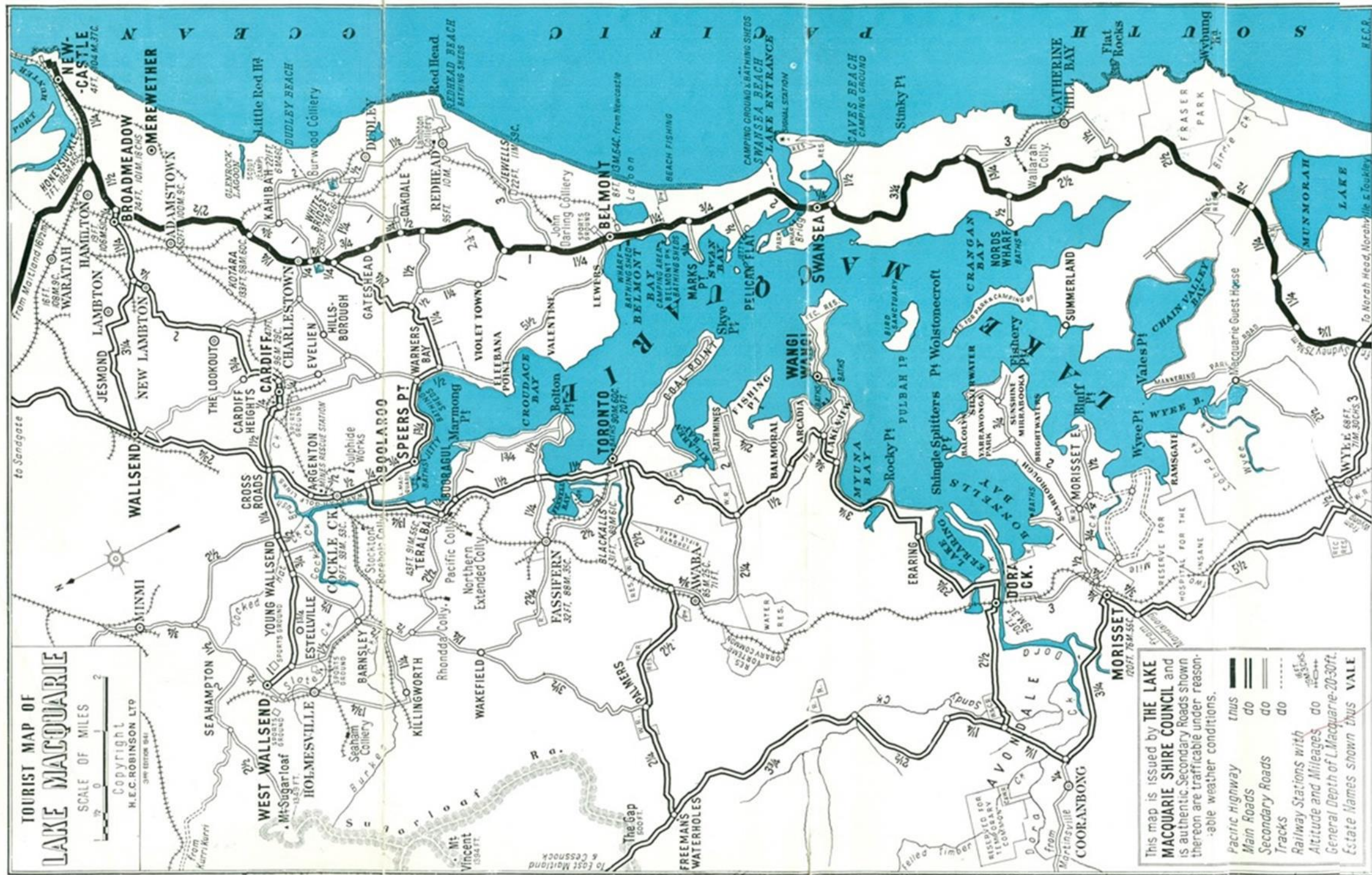
Put out fires with water or soil before leaving.

## Lake Macquarie IS NATURE'S MASTERPIECE !

For further particulars apply to THE SHIRE CLERK, Shire Office, Main Road, Speer's Point, or 'Phone Boolaroo 251.



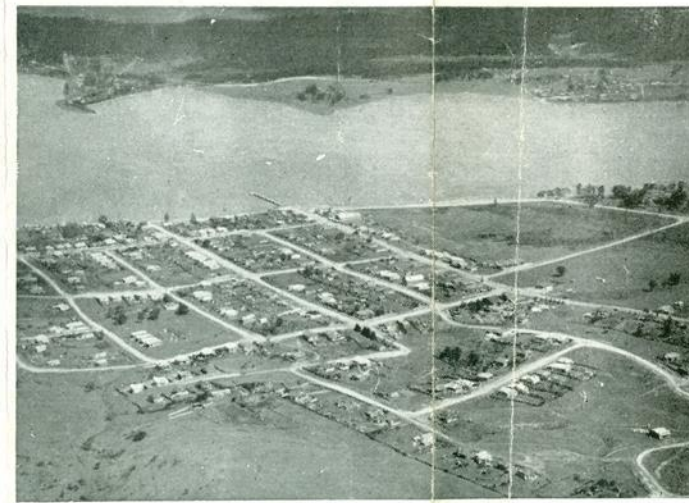




## Recommended Afternoon Drives

NEWCASTLE TO MOUNT SUGARLOAF, RETURNING VIA TERALBA, SPEER'S POINT, CROUDACE BAY AND PACIFIC HIGHWAY.

- Miles
- 0 Leaving NEWCASTLE, proceed via CARDIFF and CROSS ROADS to
  - 13½ WEST WALLSEND. Turn to right and proceed along Minmi Road ½-mile and thence to left through Seahampton to Mount Sugarloaf Turn-off at mileage 15½, thence to
  - 17 MOUNT SUGARLOAF, which commands glorious views of the whole district. Returning through WEST WALLSEND, follow the tarred road to Holmesville Turn-off; turn right to BARNESLEY, thence southerly across two railway lines to RHONDDA Turn-off (24¼) and thence turn left to
  - 27¼ TERALBA. Turn left and proceed via Watkin's Bridge to BOOLAROO, turn right to
  - 29¼ SPEER'S POINT. Turn right and inspect LAKE MACQUARIE PARK ¼-mile along foreshores; then continue to the left along the water-front to
  - 30 WARNER'S BAY as far as Croudice Bay Turn-off. At this point the motorist may return to Newcastle via CHARLESTOWN and the Pacific Highway, reaching Newcastle after covering a total distance of 42¼ miles, or he may continue via the picturesque CROUDACE BAY ROAD through luxuriantly wooded hills, with charming Lake scenery to
  - 34 BELMONT, and thence return along the Pacific Highway to
  - 48 NEWCASTLE.



Speer's Point, with Marmong Point and Booragul in the Background.

### FARES AS AT 1/9/53 TO VARIOUS LAKESIDE RESORTS.

Toronto (from Sydney) by rail: 1st Class return £17/-; 2nd Class return 19/1.  
 Belmont (from Sydney) by rail: 1st Class return, £113/-; 2nd Class return, £13/4.  
 Belmont (from Newcastle) by Bus: Single, 1/6.  
 Swansea (from Newcastle) by Bus: Single, 1/10.  
 Wallsend (from Newcastle) by Bus: Single, 1/-.  
 Speer's Point (from Newcastle) by Bus: Single, 1/6.  
 Cockle Creek (from Newcastle) by Rail: Single, 1/6.  
 Cockle Creek (from Sydney) by Rail: 1st Class return, £18/-; 2nd Class return, £11.  
 Morisset (from Sydney) by Rail: 1st Class return, £12/8; 2nd Class return, 15/11.  
 Dora Creek (from Sydney) by Rail: 1st Class return £13/-; 2nd Class return, 16/4.  
 Redhead (from Newcastle) by Bus: Single 1/4.  
 Cardiff Railway (from Newcastle) by Bus: Single, 1/2.  
 Cardiff Railway (from Newcastle) by Rail: Single, 1/1.  
 Cardiff Railway (from Sydney) by Rail: 1st Class return £18/8; 2nd Class return, £10/4.

Davies & Cannington Pty. Ltd., Printers, King St., Newcastle.

