

## **‘GOLDEN MILE’ PAVERS RECORDING**

Withers Street, West Wallsend

May 2014

**Lake  
Macquarie  
City Council**

**'GOLDEN MILE' PAVERS  
RECORDING – WITHERS STREET,  
WEST WALLSEND**

**May 2014**

Prepared by  
Umwelt (Australia) Pty Limited  
on behalf of  
Lake Macquarie City Council

Project Director: **Tim Adams**  
Project Manager: **Amanda Reynolds**  
Report No. **3221/R03/FINAL**  
Date: **May 2014**



Newcastle

75 York Street  
Teralba NSW 2284

Ph. 02 4950 5322

[www.umwelt.com.au](http://www.umwelt.com.au)

---

## TABLE OF CONTENTS

<b>1.0</b>	<b>Introduction .....</b>	<b>1</b>
1.1	Heritage Listing .....	1
1.2	Background .....	1
1.3	Methodology and Scope .....	2
1.3.1	Photographic Recording .....	2
<b>2.0</b>	<b>Historical Context.....</b>	<b>3</b>
2.1	Establishment of West Wallsend .....	3
2.2	West Wallsend Co-operative Society.....	3
2.3	The Golden Mile.....	4
<b>3.0</b>	<b>‘Golden Mile’ Pavers .....</b>	<b>5</b>
3.1	Background .....	5
3.2	Site works .....	5
3.3	Results .....	5
3.4	‘Golden Mile’ Brick Pavers .....	6
3.4.1	Lincoln Brickworks Pavers.....	6
3.4.2	Frith’s Brickyard Pavers.....	6
3.4.3	Discussion .....	7
<b>4.0</b>	<b>Results .....</b>	<b>8</b>
4.1	Interpretation .....	8
<b>5.0</b>	<b>References.....</b>	<b>9</b>

## FIGURES

<b>1.1</b>	<b>Location of Work Area.....</b>	<b>1</b>
<b>1.2</b>	<b>Potential Extent of the ‘Golden Mile’ .....</b>	<b>1</b>
<b>2.1</b>	<b>Early 1900s Photograph Looking South Down Withers Street Showing 1906 Constructed Brick Co-op Building on Corner of Withers and Brown Street.....</b>	<b>3</b>
<b>2.2</b>	<b>1930s Photograph Showing Co-operative Store Staff on Footpath in Front of Store. Note ‘Golden Mile’ Brick Pavers. ....</b>	<b>4</b>

---

## PLATES

3.1	View to north along west side of Withers Street to Carrington Street Corner showing 1930s pavers beneath asphalt footpath surface .....	5
3.2	View to northwest showing southern limit of brick pavers at Withers and Brown Street Corner .....	5
3.3	View to north showing exposed brick pavers in front of 1927 Parapet Building on Withers Street.....	5
3.4	View to northwest showing recommencement of brick paving north of gap in Co-op store buildings.....	5
3.5	View to north during removal of asphalt footpath surface in gap between the Co-op buildings – note no pavers present.....	5
3.6	View to southeast showing limit of brick pavers in front of 1910-1915 Co-Operative Society Building on Carrington Street.....	5
3.7	Detail of join line of pavers in front of 1927 Parapet Building on Withers Street.....	5
3.8	Detail of weathered pavers in front of 1927 Parapet building on Withers Street (Scale = 500 millimetres) .....	5
3.9	View to north showing brick pavers in front of 1927 Co-Operative Society Withers and Carrington Street Corner Building. Note base of metal posts .....	6
3.10	Lincoln Brickworks (on left) and Frith's Brickworks (on right) brick paver (scale = 200 millimetres) .....	6
3.11	Detail of pavers in front of 1927 Parapet Building on Withers Street (scale = 500 millimetres).....	6
3.12	Detail of Frith's Brickworks brick paver stamp (scale = 200 millimetres).....	6
3.13	Detail showing Frith's Brickyard pavers alongside the entrance to the current IGA supermarket.....	7
4.1	View to northwest showing 1906 Co-op building on corner of Withers and Brown Streets at end of works. The former locations of the 1930s pavers are shown in the footpath as bands of replacement pavers .....	8



---

# **APPENDICES**

- 1 Photographic Recording**
- 2 Interpretation Panel**

---

## 1.0 Introduction

Lake Macquarie City Council (LMCC) recently upgraded parts of Withers Street, West Wallsend, NSW. As part of these works LMCC reconstructed the road pavement, replaced kerb and gutters, widened the footpath and replaced the existing footpath surface treatment along Withers Street between Brown Street and Carrington Street. The heritage listed West Wallsend Co-operative Society Store buildings are immediately adjacent to the Withers Street work area (refer to **Figure 1.1**).

### 1.1 Heritage Listing

The West Wallsend Co-operative Society Store buildings are located along Withers Street between Brown Street and Carrington Street (refer to **Figure 1.1**). The Lake Macquarie Local Environmental Plan (LEP) 2004 lists the West Wallsend Co-operative Society Store buildings in Schedule 4 (Heritage items other than of indigenous origins and including potential archaeological sites) Part 1 (Heritage items other than of indigenous origins). The West Wallsend Co-operative Society Store buildings are also listed on the draft Lake Macquarie LEP 2014.

The Hunter Regional Environmental Plan (REP) (Heritage) 1989 identified West Wallsend as a Heritage Conservation Area. The Withers Street work area is within the conservation area. Although the Hunter REP (Heritage) 1989 was repealed by the Lake Macquarie LEP 2004, the West Wallsend Conservation Area is now listed on the draft Lake Macquarie LEP 2014.

The City of Lake Macquarie Heritage Study (1993) lists the West Wallsend Co-operative Society Store buildings as a local heritage item (WW – 26). The ‘patterned brick’ footpath (likely dated to the 1930s) formerly outside the Co-operative Store buildings is included in the description of the listing. The 1993 Heritage Study also lists ‘The Golden Mile’, which included sandstone kerb and guttering and the brick paved footpath (approximately extending along Withers Street from Wilson Street to Powell Street) as a provisional local heritage item (WW – 34) (refer to **Figure 1.2**). The Golden Mile is not currently listed under the draft Lake Macquarie LEP 2014.

### 1.2 Background

A Statement of Heritage Impact (SOHI) for the works was prepared prior to the works being undertaken (*Withers Street, West Wallsend Street Upgrades – Statement of Heritage Impact* Umwelt 2013) to address the potential heritage impacts associated with the proposed upgrade of Withers Street.

The SOHI (Umwelt 2013) identified that the street upgrade works would be:

...unlikely to result in any impacts to the heritage significance of the West Wallsend Co-operative Society Store buildings located on the west side of Withers Street between Carrington Street and Brown Street. In general, the footpath replacement works should enhance the visual amenity of the proposed works area, the listed Co-op buildings and the Heritage Conservation Area (Umwelt 2013:10).

However, the SOHI identified that upgrading the footpath

...would result in the removal of the 1930s brick paving (Umwelt 2013:10).



#### Legend

West Wallsend Co-operative Society Stores

FIGURE 1.1  
Location of Work Area



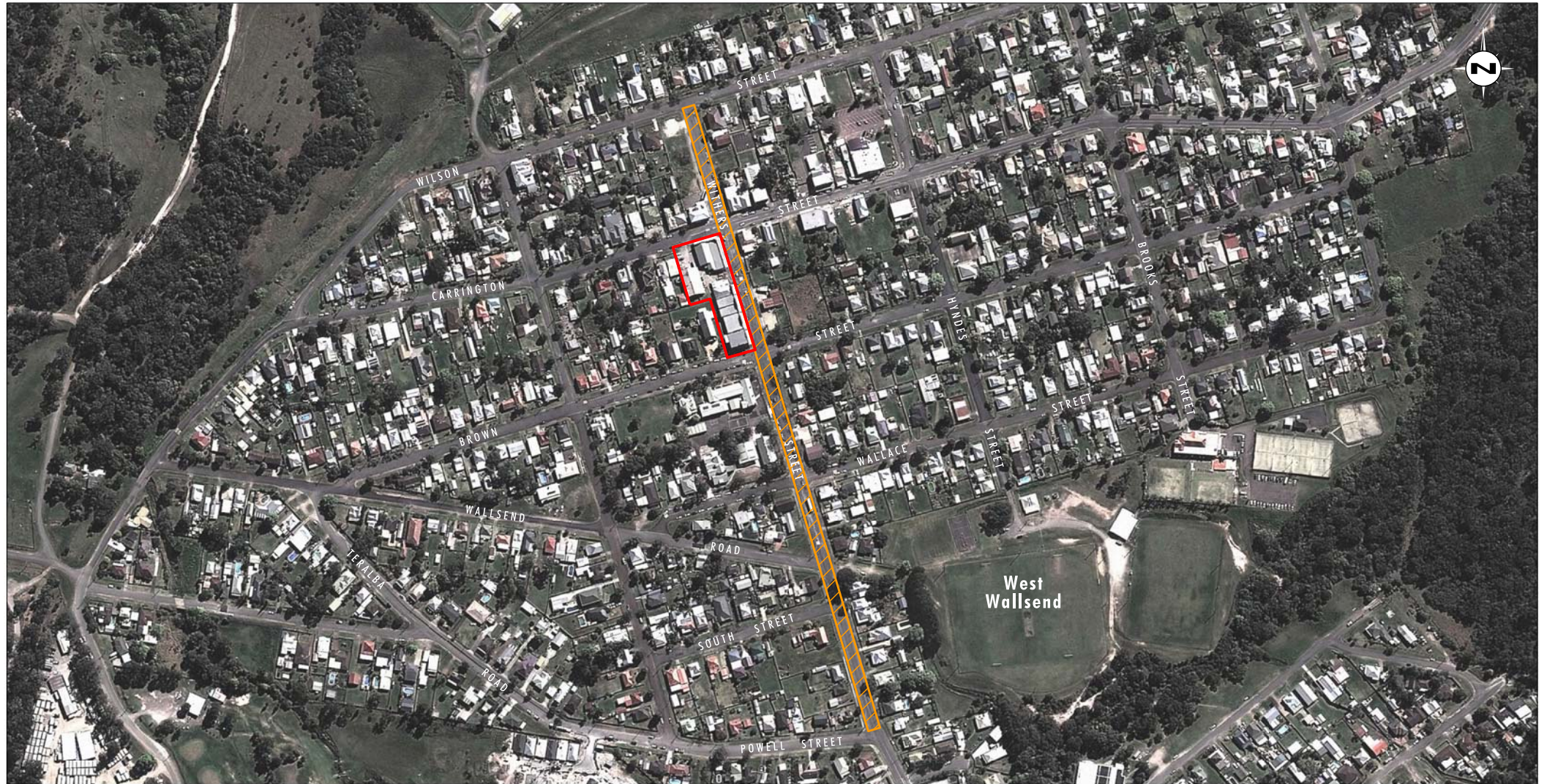


Image Source: Google Earth (2011)

0 50 100 200m  
1:5 000

#### Legend

- West Wallsend Co-operative Society Stores
- Potential Extent of the 'Golden Mile'

FIGURE 1.2

Potential Extent of  
the 'Golden Mile'



---

The street upgrade works and resulting removal of the 1930 'Golden Mile' pavers were identified as providing an opportunity to identify the original extent and design of the brick paving; information that was not known at the time from the available historical documentation. As a result the SOHI recommended that

...if feasible, the extent of the 1930s brick paving exposed during the proposed works should be recorded in accordance with Heritage Branch, OEH guidelines *Photographic Recording of Heritage Items Using Film or Digital Capture* (2006) prior to their removal.

This report comprises a record of the works and the exposed 'Golden Mile' pavers.

## 1.3 Methodology and Scope

Umwelt photographically recorded the exposure of the 'Golden Mile' paving during the LMCC Withers Street (between Brown and Carrington Streets), West Wallsend upgrade works. The recording was dependant on the timing of the footpath surface replacement works and as such was undertaken over seven separate occasions in September and October 2013 during both day and night work periods.

This report does not strictly comprise an archival photographic recording in accordance with Heritage Division, Office of Environment and Heritage (OEH) guidelines *Photographic Recording of Heritage Items Using Film or Digital Capture* (Heritage Office 2006). However, it has been prepared in consideration of the Heritage Division guidelines and also includes some discussion regarding the nature, extent and features of the pavers in addition to the actual recording itself.

### 1.3.1 Photographic Recording

The photographic recording was carried out in digital media with the following:

- Nikon D300 Digital SLR Camera with a sensor size of 12.3 MP;
- SIGMA 17-70mm F2.8-4.5 DC Macro Lens; and
- Nikon Coolpix AW100.

The photographic recording is included as **Appendix 1** and includes:

- thumbnail image sheets (proof sheets) of all images (**Appendix 1**);
- catalogue sheets/photographic record sheets (**Appendix 1**);
- photographic plan (**Figures A1-A3**) showing the locations of all of the images; and
- one CD with PDFs of all of the above files and large format JPEGs of all photographs.

---

## 2.0 Historical Context

A brief historical context is provided below.

### 2.1 Establishment of West Wallsend

West Wallsend developed as a mining town in the late 1880s, after the formation of the West Wallsend Coal Company in 1885. The town was planned and developed by the mining company to house its own workers and was large enough to support commercial and community services. In 1887 one-quarter acre lots were auctioned off in the centre of town. The name West Wallsend came out of an attempt to create a good impression with coal users who had been happy with the quality of the product from the Newcastle Wallsend Coal Company. The town was laid out on a ridge near the coal works and railway, providing good views and drainage. The first buildings constructed were two hotels, one prominently on a hill, and both near the mine (EJE 1999:11).

In 1895 the Caledonian Coal Company took over the West Wallsend Colliery and the workforce and output soon doubled. The town developed quickly and by 1910 the town had the steam tram, two schools, roads, the West Wallsend Co-operative Society, churches, post office, School of Arts, Masonic Institute, reticulated water and five hotels, with an outdoor picture theatre opened in 1911 (Suters 1993). The Co-operative Society continued expanding and by 1927 it was claimed they supplied more than 75 per cent of customer demands. The main shopping centre developed along the track that followed the ridge line, and is today Carrington Street (EJE 1999:11-12).

Although the West Wallsend mine closed in 1923, the community survived as most workers found employment at the other nearby mines. However, in 1929 a 14 month mine lock-out as part of a major industrial dispute across the Hunter Valley mines, followed by the Depression led to 90 per cent of workers being unemployed and a decline in the population base (EJE 1999:12). By 1935, many former mine workers had found work with the Government building roads, including the 'Golden Mile' along Withers Street, West Wallsend (Suters 1993).

### 2.2 West Wallsend Co-operative Society

The West Wallsend Co-operative Society (the Co-op) was founded in 1891, with 22 members. Its first commercial venture was to lease a shop (still existing) and adjoining house at 47 Carrington Street. The house was occupied by the first manager, Edward Stobbs. The Co-op grew quickly, constructing larger premises on Withers Street, opposite the existing listed Co-op buildings. In 1896, Stobbs left the Co-op to set up his own business in competition to the West Wallsend Co-op (OEH nd).

In 1905 the Co-op purchased J.D. Thomas's butchers shop on the corner of Carrington and Withers Streets along with the shop manager's residence behind the shop. It is likely the Co-op also purchased the land at the Corner of Withers and Brown Streets at this time, on which they constructed the first two-story brick Co-op building on Withers Street which was opened in 1906 (refer to **Figure 2.1**). The downstairs of this building consisted of two shops including Drapery, Millinery and Tailoring departments and a line shaft equipped workshop upstairs. The Co-op likely bought Lot 7 on the south side of Carrington Street in 1906 and constructed the brick built produce store facing Carrington Street (OEH nd).



FIGURE 2.1

Early 1900s Photograph Looking South Down Withers Street Showing 1906  
Constructed Brick Co-op Building on Corner of Withers and Brown Streets



---

Between 1910 and 1915 the Co-op built a new shop on Carrington Street next to Thomas's butchers shop. The original butchers shop was demolished around 1926, and the existing Withers and Carrington Street corner building was constructed in 1927 adjacent to the 1910-1915 constructed building. At this time, there was an extensive building program, bringing together the Co-op buildings as a continuous line of shops along Withers Street with the three additional parapeted buildings being opened in February 1927. These 1927 constructed buildings along with the 1910-1915 and 1906 constructed buildings form the existing listed West Wallsend Co-operative Society Stores (OEHL nd).

By the 1930s and even during the Depression, the Co-op had staff of over 40 people and a large variety of departments (Suters 1993). Business declined throughout the 1950s and the West Wallsend Co-op merged with the Newcastle Co-operative Society to form the Newcastle and District Co-operative Society in 1964. This Society closed in 1980 and all the buildings were sold (EJE 1999).

## 2.3 The Golden Mile

Mining was the key source of employment for men in West Wallsend; however the Great Depression of the 1930s meant that mines did not reopen following the collapse of the 1929 industrial dispute and the impact on the local economy was heavy. Men looking for work at the time were sent to unemployment relief camps, where they worked on road construction around NSW including in West Wallsend. Prior to these civil works, drainage at West Wallsend consisted of a simple ditch, draining water downhill into Slatey Creek (refer to **Figure 2.1**). The 1930s Government road works in West Wallsend included the construction of sandstone kerb and guttering along Withers Street and some paving in the shopping centre, in what became known as the 'Golden Mile' (HLA 1999:1). The exact extent of the 'Golden Mile' is unknown, however it is thought to have extended along Withers Street from at least Wilson Street to Powell Street or further (Suters 1993) (refer to **Figure 1.2**). A 1930s photograph of the Co-op store staff outside the store building shows the brick paving likely constructed as part of the 'Golden Mile' works (refer to **Figure 2.2**).

The concrete gutters now in place along most of Withers Street likely replaced the original sandstone kerb and guttering when the streets were sealed in the 1960s (HLA 1999:1).



FIGURE 2.2

1930s Photograph Showing Co-operative Store Staff on Footpath in Front of Store. Note 'Golden Mile' Brick Pavers

---

## 3.0 'Golden Mile' Pavers

### 3.1 Background

Prior to the street upgrade works commencing, remnant 1930s constructed pavers were evident beneath the then existing asphalt footpath surface on the west side of Withers Street. These pavers appear to have formed the footpath surface outside the Co-op Store buildings on the west side of Withers Street and outside the Withers Street/Carrington Street corner building (refer to **Plate 3.1**).

There were no existing kerb and gutters within the proposed work area that related to the construction of the 'Golden Mile'. The existing kerb and gutters within the proposed work area on the west side of Withers Street were all concrete constructed.

### 3.2 Site works

The works to replace the then existing asphalt footpath surface comprised removing the asphalt from on top of the 'Golden Mile' pavers to expose the extent of pavers remaining.

Following the photographic recording of the pavers, the pavers were removed in order for the required footpath levels to be achieved while also avoiding the raising of the footpath levels against the listed Co-op buildings.

### 3.3 Results

In general, following the removal of the asphalt footpath surface, the pavers were found to be in good condition and likely surviving in the same formation as they were originally laid; forming a paved footpath outside the Co-op store buildings located on Withers Street between Brown and Carrington Streets.

The pavers commenced at the corner of Brown and Withers Street in line with the edge of the 1906 constructed corner Co-op building (the current West Wallsend Hot Bread shop) (refer to **Plate 3.2**) and continued up Withers Street towards Carrington Street (refer to **Plate 3.3**). The pavers stopped at the edge of the northern most 1927 constructed Co-op parapeted building (the current IGA supermarket) at the edge of the gap in the Co-op store buildings. No pavers were exposed in the gap in the Co-op buildings, however the pavers continued on the other side of the gap alongside the Withers and Carrington Street Co-op corner building (refer to **Plate 3.4**). It is likely this area of footpath, in the gap between the Co-op buildings, was never paved (refer to **Plate 3.5**). From the north side of the gap the pavers continued round the Withers and Carrington Street corner to the edge of the Co-op buildings on Carrington Street (refer to **Plate 3.6**).

The pavers were laid in a herringbone pattern and may have been laid by different work groups working from different directions. The location where the different sections meet is evident with partial pavers being used at the join of the different sections. These joins are evident close to the Withers and Carrington Street corner (where the current Pharmacy building commences) and alongside the entrance to the current Newsagents building (refer to **Plate 3.7**).

In places the pavers have worn to the extent that their pattern is no longer distinguishable. This is especially evident outside the 1927 constructed Co-op parapeted buildings towards the Brown Street corner (refer to **Plate 3.8**).





PLATE 3.1  
View to north along west side of Withers Street to Carrington Street  
Corner showing 1930s pavers beneath asphalt footpath surface



PLATE 3.2  
View to northwest showing southern limit of brick pavers at Withers  
and Brown Street Corner





PLATE 3.3  
View to north showing exposed brick pavers in front of 1927  
Parapet Building on Withers Street



PLATE 3.4  
View to northwest showing recommencement of brick paving north  
of gap in Co-op store buildings





PLATE 3.5

View to north during removal of asphalt footpath surface in gap between the Co-op buildings - note no pavers present



PLATE 3.6

View to southeast showing limit of brick pavers in front of 1910-1915 Co-Operative Society Building on Carrington Street





PLATE 3.7

Detail of joint line of pavers in front of 1927 Parapet Building on Withers Street



PLATE 3.8

Detail of weathered pavers in front of 1927 Parapet Building on Withers Street (Scale = 500 millimetres)



---

The base of metal posts of a former sign post are evident, cutting the brick pavers close to the Withers and Carrington Street corner (refer to **Plate 3.9**). The sign post is unlikely to have been related to the date or use of the brick paved footpath as the posts also cut through the asphalt surface above the pavers.

### 3.4 ‘Golden Mile’ Brick Pavers

Two different types of brick pavers from two different Brickworks were exposed during the removal of the asphalt footpath surface (refer to **Plate 3.10**). The brickworks comprised:

- Lincoln Brickworks in Wingham near Taree; and
- Frith’s Brickyard in Holmsville.

#### 3.4.1 Lincoln Brickworks Pavers

Lincoln Brickworks in Wingham near Taree originally supplied the majority of the pavers used in the Golden Mile (Michael Baker pers. comm.). These pavers comprised Lincoln Brick Wentworth type of pavers. The Lincoln Brickworks are run by the Baker family and were established in 1852 when John Baker arrived in NSW from England. The brickworks still manufactures bricks in the traditional dry press way from locally quarried clay ([www.lincolnbricks.com.au](http://www.lincolnbricks.com.au)).

The Lincoln Brick Wentworth type of paver exposed during LMCC works was an orangey red coloured paver with a distinctive surface pattern measuring on average 225 by 113 by 55 millimetres (refer to **Plate 3.11**).

#### 3.4.2 Frith’s Brickyard Pavers

Frith’s Brickyard was a local brickworks formerly on the southwest corner of Appletree Road and William Street Holmsville (City of Lake Macquarie Heritage Study – inventory of sites and items, OEH listing sheet).

The brickyard was in operation from approximately 1885 and is thought to have finished producing bricks by the late 1920s/very early 1930s. The bricks were made from the local clay which when fired produced reddish brown bricks and pavers (West Wallsend District Heritage Group Inc).

William Frith constructed the brick built Holmsville Manor (the first home built in Holmsville), on the corner William Street and Appletree Road, in approximately 1895. William was a bricklayer, the brother of Richard Frith, a brickmaker and son-in-law of pioneer Joseph Holmes, who started the Frith’s Brickyard (OEH listing sheet, Sugarloaf District Heritage Group).

The Friths Brickyard pavers exposed during LMCC works were a similar orangey red coloured brick paver with a diamond surface pattern measuring on average 230 by 111 by 65 millimetres (refer to **Plate 3.10**). The underside of the brick paver is stamped with the letters ‘FBWW’ (Frith’s Brickyard West Wallsend) (refer to **Plate 3.12**).



PLATE 3.9

View to north showing brick pavers in front of 1927 Co-Operative Society Withers and Carrington Street Corner Building. Note base of metal posts



PLATE 3.10

Lincoln Brickworks (on left) and Frith's Brickworks (on right) brick paver (scale = 200 millimetres)





PLATE 3.11  
Detail of pavers in front of 1927 Parapet Building on Withers Street (Scale = 500 millimetres)



PLATE 3.12  
Detail of Frith's Brickworks brick paver stamp (scale = 200 millimetres)

---

### 3.4.3 Discussion

As discussed, the majority of the pavers were sourced from Lincoln Brickworks, however a small number were sourced from Frith's Brickyard. The Frith's Brickyard pavers may have been used to replace worn or damaged Lincoln Brickwork's pavers; being a local company they would have been easier to source than ordering from the Lincoln Brickworks. The Frith's Brickyard pavers were identified in isolated areas adjacent to the entrances to a number of the store buildings (including the current Newsagents and IGA supermarket within the 1927 constructed Co-op parapeted buildings) that may have been high trafficable areas or damaged during upkeep works to the Co-op building entrances/steps.

**Plate 3.13** shows the Frith's Brickyard pavers alongside the entrance to the current IGA supermarket – the northernmost shop in the 1927 constructed parapeted buildings.



PLATE 3.13

Detail showing Frith's Brickyard pavers alongside the entrance to the current IGA supermarket

---

## 4.0 Results

As discussed in the 2013 SOHI and above, the LMCC works identified the original extent and design of the brick paving and enabled their original extent to be interpreted within the new footpath.

As part of the 2013 LMCC streetscape works, replacement pavers were sourced from Lincoln Brickworks and used, in the form of banding, to indicate the extent and locations of the original pavers. In addition, lines were etched along the inside edge of the new kerb to show the original width of the Golden Mile footpath and the likely location of the original kerbing (refer to **Plate 4.1**). Examples of the original brick pavers have been used in the brick banding between the newsagents and the IGA supermarket. Original brick pavers have also been installed on the eastern corner of Withers and Brown Streets.

A number of the original brick pavers, both the Lincoln Brick Wentworth Cedar and Frith's Brickworks types, were provided to the West Wallsend District Heritage Group Inc (located at the West Wallsend High School & Community Museum).

### 4.1 Interpretation

The 2013 SOHI also recommended that:

...an interpretation plan/strategy should be developed to determine how the heritage significance of the proposed work area is to be communicated. The strategy could include, but not necessarily be limited to, interpretive signage illustrating the story of West Wallsend, the West Wallsend Co-operative Store and the 'Golden Mile'. The location of the small section of remnant pavers present beneath the grass verge on the east side of Withers Street or the gap in the Co-op buildings (north of the IGA store) should be considered as possible locations of interpretive signage (Umwelt 2013:10).

An interpretation sign has been developed focusing on the 'Golden Mile' and the brick pavers as a way of publicly disseminating information about the LMCC Withers Street upgrade works and the removed brick pavers. This interpretation sign is intended to be installed on Withers Street in the gap in the Co-op buildings (north of the IGA store) and could, in the future, form one of a series of interpretive signs regarding the history of West Wallsend.

A number of the original brick pavers will be installed beneath the interpretive sign.

The layout and content of the sign is included as **Appendix 2**.





PLATE 4.1

View to northwest showing 1906 Co-op building on corner of Withers and Brown Streets at end of works. The former locations of the 1930s pavers are shown in the footpath as bands of replacement pavers



---

## 5.0 References

EJE Landscape Architecture 1999. *West Wallsend Heritage Main Street Study*. Prepared for Lake Macquarie City Council

HLA-Envirosciences Pty Limited 1999. *A Heritage Assessment of Stone and Guttering, 'the Golden Mile' Withers Street, West Wallsend*. Prepared for Lake Macquarie City Council.

Lincoln Brickworks. <http://www.lincolnbricks.com.au/lbw/home.html>. Accessed 29 July 2013

Office of Environment and Heritage. Listing Sheet (HV-04). Accessed 1 May 2014.  
<http://www.environment.nsw.gov.au>

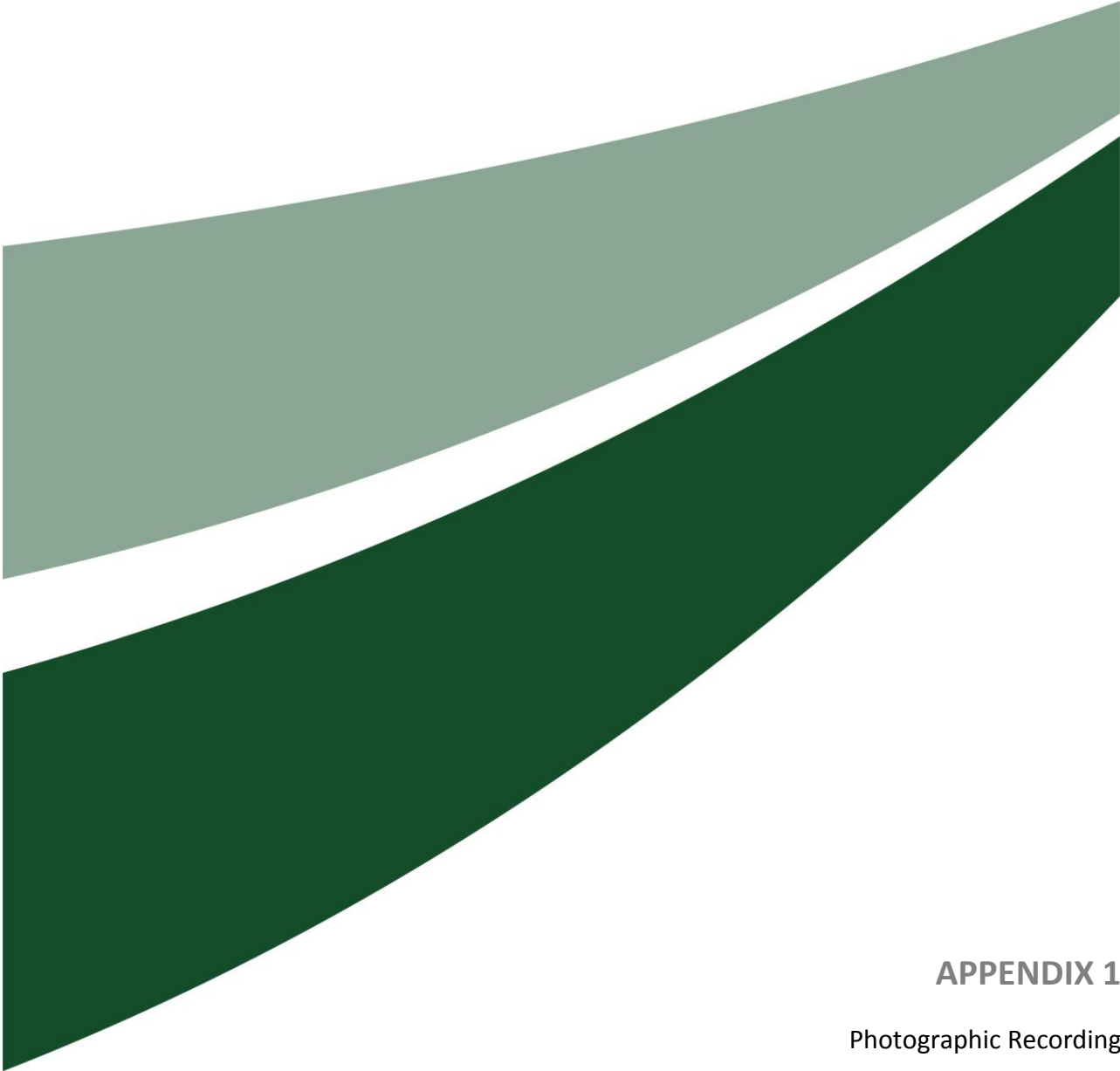
Office of Environment and Heritage (OEH). *West Wallsend Co-operative Stores*. Listing Sheet

Sugarloaf District Heritage Group. Accessed 01 May 2014. <http://history.lakemac.com.au>.

Suters Architects Snell 1993. *City of Lake Macquarie Heritage Study: final report*. Prepared for Lake Macquarie City Council.

Umwelt 2013. *Withers Street, West Wallsend Street Upgrades – Statement of Heritage Impact*. Letter report to Lake Macquarie City Council dated 10 September 2013.

West Wallsend Public School Centenary Committee 1987. *'Neath Mount SugarLoaf.'*



## APPENDIX 1

Photographic Recording



Image Source: Google Earth (2010)

### Legend

-  Photo Location
-  Photo Direction

FIGURE A1  
Photographic Plan A1





Image Source: Google Earth (2010)

### Legend

- Photo Location
- Photo Direction

FIGURE A2

Photographic Plan A2





### Legend

- Photo Location
- Photo Direction

FIGURE A3

Photographic Plan A3

<b>Photographic Record Sheet</b>			
<b>Job No: 3221</b>	<b>Site: Withers Street, West Wallsend</b>	<b>Date: September-October 2013</b>	
<b>Photographer: Amanda Reynolds and Tim Adams (Umwelt)</b>		<b>Page: 1 of 1</b>	
<b>Description: Pre-work photographs</b>			
<b>Image/File No</b>	<b>Description</b>		<b>Plan Reference</b>
	<b>Subject and Detail</b>	<b>Orientation</b>	
DSCN0015	1927 Co-Operative Society Building - Withers and Carrington Street Corner	SSW	A1
DSCN0017	1927 Co-Operative Society Building - Withers and Carrington Street Corner	SW	A1
DSCN0019	Bitumen covered pavers in front of Co-Operative Society Corner Building – Withers Street	S	A1
DSCN0027	Bitumen covered pavers in front of Co-Operative Society Corner Building – Withers Street	N	A1
DSCN0030	Bitumen covered pavers in front of Co-Operative Society Corner Building – Withers Street	NNE	A1
DSCN0034	1927 Parapet Buildings on Withers Street	SSW	A1
DSCN0035	Bitumen covered pavers in front of Parapet Buildings on Withers Street	SSE	A1
DSCN0037	Bitumen covered pavers in front of Parapet Buildings on Withers Street	S	A1
DSCN0038	Central 1927 Parapet Building on Withers Street	SW	A1
DSCN0041	Bitumen covered pavers meeting modern kerbing in front of central Parapet Building on Withers Street	NNE	A1
DSCN0044	Southern most of the 1927 Parapet Building on Withers Street	SW	A1
DSCN0045	Bitumen covered pavers meeting modern kerbing in front of southern most Parapet Building on Withers Street	NNE	A1
DSCN0052	Bitumen covered pavers and 1906 Co-Operative Society Building from Brown Street	N	A1
DSCN0053	Brown Street Façade of 1906 Co-Operative Society Building	N	A1
DSCN0059	Withers Street Façade of 1906 Co-Operative Society Building	W	A1
DSCN0064	Withers Street Façade of 1927 Co-Operative Society Corner Building	NW	A1
DSCN0066	Carrington Street Façade of 1927 Co-Operative Society Corner Building	SE	A1

**Photographic Record Sheet****Job No: 3221** **Site: Withers Street, West Wallsend** **Date: September-October 2013****Photographer: Amanda Reynolds and Tim Adams (Umwelt)** **Page: 1 of 2****Description: Pre-removal of asphalt**

Image/File No	Description		Plan Reference
	Subject and Detail	Orientation	
DSC_1366	Brown Street Façade of 1906 Co-Operative Society Building after kerb upgrade	N	A2
DSC_1374	Bitumen covered pavers in front of 1906 Co-Operative Society Building corner of Brown and Withers Streets after kerb upgrade	N	A2
DSC_1382	Withers Street Façade of 1906 Co-Operative Society Building after footpath widened	WNW	A2
DSC_1383	Withers Street Façade of 1906 Co-Operative Society Building after footpath widened	W	A2
DSC_1389	Southern most of the 1927 Parapet Buildings on Withers Street after footpath widened	W	A2
DSC_1392	Bitumen covered pavers in front of Parapet Buildings on Withers Street after footpath widened	N	A2
DSC_1399	Southern most of the 1927 Parapet Buildings on Withers Street after footpath widened	SW	A2
DSC_1400	Central of the 1927 Parapet Buildings on Withers Street after footpath widened	W	A2
DSC_1405	Northern two of the 1927 Parapet Buildings on Withers Street after footpath widened	WNW	A2
DSC_1410	Bitumen covered pavers in front of Parapet Buildings on Withers Street after footpath widened	N	A2
DSC_1413	Northern most of the three 1927 Parapet Buildings on Withers Street after footpath widened	W	A2
DSC_1421	Withers Street Co-Operative Society Buildings after footpath widened	SW	A2
DSC_1429	Bitumen covered pavers in front of Parapet Buildings on Withers Street after footpath widened	N	A2
DSC_1431	Northern most of the three 1927 Parapet Buildings on Withers Street after footpath widened	W	A2
DSC_1439	Withers Street Co-Operative Society Buildings after footpath widened	WSW	A2
DSC_1442	Bitumen covered pavers on Withers Street after footpath widened	N	A2
DSC_1452	IGA façade and bitumen covered pavers in front	SSW	A2



**Photographic Record Sheet**

DSC_1455	Bitumen covered pavers in front of northern most Parapet Buildings on Withers Street after footpath widened	SSW	A2
DSC_1461	Empty lot between the Co-Operative Society Parapet Buildings and Withers / Carrington Street Corner Building after footpath widened	W	A2
DSC_1467	Withers Street building of 1927 Co-Operative Society Building - Withers and Carrington Street Corner after footpath widened	NW	A2
DSC_1473	Bitumen covered pavers in front of Parapet Buildings on Withers Street after footpath widened	S	A2
DSC_1477	Bitumen covered pavers in front of northern most Parapet Building on Withers Street after footpath widened	S	A2
DSC_1481	Withers Street building of 1927 Co-Operative Society Building - Withers and Carrington Street Corner after footpath widened	N	A2
DSC_1485	Exposed brick pavers in the bitumen on Withers St after footpath widened	N	A2
DSC_1490	Exposed brick pavers in the bitumen on Withers St after footpath widened	NW	A2
DSC_1503	1927 Co-Operative Society Building - Withers and Carrington Street Corner after footpath widened	SSW	A2
DSC_1513	Carrington Street building of 1927 Co-Operative Society Corner Building	S	A2
DSC_1525	Carrington Street building of 1927 Co-Operative Society Corner Building and produce barn	SE	A2
DSC_1532	Carrington Street building of 1927 Co-Operative Society Corner Building	E	A2
DSC_1535	Estimated limit of brick pavers in front of Carrington Street building of 1927 Co-Operative Society Corner Building	E	A2
DSC_1545	Cracking bitumen in front of Carrington Street building of 1927 Co-Operative Society Corner Building – showing likely location of pavers beneath bitumen		A2
DSC_1546	Estimated limit of brick pavers in front of Carrington Street building of 1927 Co-Operative Society Corner Building	SE	A2

**Photographic Record Sheet****Job No: 3221**      **Site: Withers Street, West Wallsend**      **Date: September-October 2013****Photographer: Amanda Reynolds and Tim Adams (Umwelt)**      **Page: 1 of 1****Description: Withers and Brown Street Corner – 1906 Co-op Store**

Image/File No	Description		Plan Reference
	Subject and Detail	Orientation	
DSC_2022	Exposed brick pavers in front of 1906 Co-Operative Society Building, with some Withers Street repaving complete to north	N	A3
DSC_2045	Exposed brick pavers in front of 1906 Co-Operative Society Building, view of entry	WNW	A3
DSC_2049	Entry into bread shop in 1906 Co-Operative Society Building	W	A3
DSC_2058	Detail of brick pavers at entry into bread shop in 1906 Co-Operative Society Building	W	A3
DSC_2070	Southern limit of brick pavers in front of 1906 Co-Operative Society Building	NW	A3
DSC_2079	Southern limit of brick pavers in front of 1906 Co-Operative Society Building	NW	A3
DSC_2096	Southern limit of brick pavers in front of 1906 Co-Operative Society Building	SSW	A3
DSC_2106	Details of pavers in front of 1906 Co-Operative Society Building		A3
DSC_2114	Southern limit of brick pavers in front of 1906 Co-Operative Society Building	NW	A3

<b>Photographic Record Sheet</b>			
<b>Job No: 3221</b>	<b>Site: Withers Street, West Wallsend</b>	<b>Date: September-October 2013</b>	
<b>Photographer: Amanda Reynolds and Tim Adams (Umwelt)</b>		<b>Page: 1 of 1</b>	
<b>Description: 1927 Parapet Building – Southern Portion</b>			
<b>Image/File No</b>	<b>Description</b>		<b>Plan Reference</b>
	<b>Subject and Detail</b>	<b>Orientation</b>	
DSC_1604	Exposed brick pavers in front of 1927 Parapet Building on Withers Street (Scale = 1 metre)	N	A3
DSC_1608	Exposed brick pavers in front of 1927 Parapet Building on Withers Street (Scale = 1 metre)	N	A3
DSC_1620	Exposed brick pavers in front of 1927 Parapet Building on Withers Street	S	A3
DSC_1626	Exposed brick pavers in front of 1927 Parapet Building on Withers Street	N	A3
DSC_1635	Exposed brick pavers in front of 1927 Parapet Building on Withers Street	S	A3
DSC_1665	Entry into shop on Withers Street in front of 1927 Parapet Building on Withers Street (Scale = 1 metre)	W	A3
DSC_1672	Exposed brick pavers in front of 1927 Parapet Building on Withers Street	NW	A3
DSC_1693	Entry into shop in of 1927 Parapet Building on Withers Street (Scale = 1 metre)	W	A3
DSC_1697	Detail of brick pavers adjacent to shop entry (Scale = 1 metre)	W	A3
DSC_1706	Detail of brick pavers adjacent to shop entry	W	A3
DSC_1714	Exposed brick pavers in front of 1927 Parapet Building on Withers Street	NW	A3
DSC_1721	Details of pavers in front of 1927 Parapet Building on Withers Street (Scale = 50 centimetres)		A3
DSC_1734	Details of pavers in front of 1927 Parapet Building on Withers Street		A3
DSC_1740	Details of weathered pavers in front of 1927 Parapet Building on Withers Street (Scale = 50 centimetres)		A3
DSC_1756	Details of weathered pavers in front of 1927 Parapet Building on Withers Street		A3



<b>Photographic Record Sheet</b>			
<b>Job No: 3221</b>	<b>Site: Withers Street, West Wallsend</b>	<b>Date: September-October 2013</b>	
<b>Photographer: Amanda Reynolds and Tim Adams (Umwelt)</b>		<b>Page: 1 of 2</b>	
<b>Description: 1927 Parapet Building – Northern Portion</b>			
<b>Image/File No</b>	<b>Description</b>		<b>Plan Reference</b>
	<b>Subject and Detail</b>	<b>Orientation</b>	
DSC_2166	Exposed brick pavers in front of IGA (1927 Parapet Building) on Withers Street	W	A3
DSC_2168	Exposed brick pavers in front of Newsagent (1927 Parapet Building) on Withers Street	SW	A3
DSCN2948	Shop entry in 1927 Parapet Building on Withers Street with exposed brick pavers	W	A3
DSCN2949	Detail of shop entry in 1927 Parapet Building on Withers Street with exposed brick pavers	W	A3
DSCN2950	Details of weathered pavers in front of 1927 Parapet Building on Withers Street		A3
DSCN2951	Detail of joining section of pavers in front of 1927 Parapet Building on Withers Street	W	A3
DSCN2952	Detail of join line of pavers in front of 1927 Parapet Building on Withers Street		A3
DSCN2956	Detail of join line of pavers in front of 1927 Parapet Building on Withers Street		A3
DSCN2958	Newsagent entry (1927 Parapet Building) with exposed brick pavers on Withers Street	NW	A3
DSCN2959	Newsagent entry (1927 Parapet Building) with exposed brick pavers on Withers Street	W	A3
DSCN2960	Detail of brick pavers in front of Newsagent (1927 Parapet Building) on Withers Street – note different paver types	W	A3
DSCN2963	Detail of brick pavers in front of Newsagent (1927 Parapet Building) on Withers Street – note different paver types	WSW	A3
DSCN2967	Detail of brick pavers in front of Newsagent (1927 Parapet Building) on Withers Street – note different paver types	WSW	A3
DSCN2973	Detail of brick pavers in front of IGA (1927 Parapet Building) on Withers Street – note different paver types	W	A3
DSCN2976	Detail of brick pavers in front of IGA (1927 Parapet Building) on Withers Street – note different paver types	W	A3
DSCN2977	Detail of brick pavers in front of IGA (1927 Parapet Building) on Withers Street – note different paver types	SW	A3
DSCN2978	Exposed brick pavers in front of 1927 Parapet Building on Withers Street	S	A3

<b><i>Photographic Record Sheet</i></b>			
DSCN2982	Exposed brick pavers in front of IGA (1927 Parapet Building) on Withers Street	NW	A3
DSCN2985	Exposed brick pavers in front of Newsagent (1927 Parapet Building) on Withers Street	W	A3
DSCN2990	Detail of brick pavers in front of Newsagent (1927 Parapet Building) on Withers Street – note different paver types	W	A3

**Photographic Record Sheet****Job No: 3221****Site: Withers Street, West Wallsend****Date: September-October 2013****Photographer: Amanda Reynolds and Tim Adams (Umwelt)****Page: 1 of 1****Description: Gap in Co-Operative Society buildings north of IGA and 1927 Co-Operative Society Building - Withers and Carrington Street Corner**

<b>Image/File No</b>	<b>Description</b>		<b>Plan Reference</b>
	<b>Subject and Detail</b>	<b>Orientation</b>	
DSC_1804	Pavers removed in front of IGA (1927 Parapet Building) on Withers Street	S	A3
DSC_1805	Removal of bitumen in front of gap in the Co-Operative Society buildings	N	A3
DSC_1890	Limit of brick paving between gap in store buildings and 1927 Co-Operative Society Corner Building	NW	A3
DSC_1894	Limit of brick paving between gap in store buildings and 1927 Co-Operative Society Corner Building	N	A3
DSC_1895	Limit of brick paving between gap in store buildings and 1927 Co-Operative Society Corner Building	N	A3
DSC_1899	Fill below bitumen in gap between store buildings – note no pavers present	N	A3
DSC_1927	Limit of brick paving between gap in store buildings and 1927 Co-Operative Society Corner Building	NW	A3
DSCN_2917	Removal of bitumen over fill in front of gap between the Co-Operative Society buildings – note no pavers present	N	A3



Photographic Record Sheet			
Job No: 3221	Site: Withers Street, West Wallsend		Date: September-October 2013
Photographer: Amanda Reynolds and Tim Adams (Umwelt)			Page: 1 of 2
Description: 1927 Co-Operative Society Building - Withers and Carrington Street Corner. Withers Street Portion			
Image/File No	Description		Plan Reference
	Subject and Detail	Orientation	
DSC_1817	Detail of bricks as bitumen removal is in progress in front of 1927 Co-Operative Society Building - Withers and Carrington Street Corner (Scale = 50 centimetres)	S	A3
DSC_1856	Uncovered brick pavers in front of 1927 corner Co-Operative Society Corner Building (Scale = 50 centimetres)	N	A3
DSC_1867	Detail of brick pavers in front of 1927 corner Co-Operative Society Corner Building (Scale = 50 centimetres)	N	A3
DSC_1873	Detail of joint in brick pavers in front of 1927 corner Co-Operative Society Corner Building	S	A3
DSC_1882	Uncovered brick pavers in front of end shop in 1927 Co-Operative Society Corner Building	W	A3
DSC_1885	Uncovered brick pavers in front of end shop in 1927 Co-Operative Society Corner Building	W	A3
DSC_1908	Detail of brick pavers in front of 1927 Co-Operative Society Corner Building	W	A3
DSC_1914	Exposed brick pavers in front of end shop in 1927 Co-Operative Society Corner Building	S	A3
DSC_1918	Exposed brick pavers in front of end shop in 1927 Co-Operative Society Corner Building	SW	A3
DSC_1950	Detail of sign post base in brick pavers (Scale = 1 metre)	N	A3
DSC_1954	Brick pavers in front 1927 Co-Operative Society Corner Building	N	A3
DSC_1956	Detail of sign post base in brick pavers	N	A3
DSC_1961	Area of brick pavers disturbed prior to current bitumen removal) (Scale = 1 metre)	E	A3
DSC_1964	Area of brick pavers disturbed prior to current bitumen removal) (Scale = 1 metre)	N	A3
DSC_1967	Area of heavily stuck bitumen over the pavers in front 1927 Co-Operative Society Corner Building	W	A3
DSC_1975	Brick pavers in front 1927 Co-Operative Society Corner Building	NW	A3
DSC_1980	Detail of shop entry with exposed brick pavers - 1927 Co-Operative Society Corner Building	W	A3
DSC_1992	Brick pavers in front of 1927 Co-Operative Society Corner Building	S	A3
DSC_1994	Shop entry with exposed brick pavers in 1927 Co-Operative Society Corner Building	SW	A3
DSC_1999	Detail of pavers against 1927 Co-Operative Society Corner Building	W	A3
DSC_2002	Edge of heavily stuck bitumen over the pavers in front of 1927 Co-Operative Society Corner Building	N	A3

---

**Photographic Record Sheet**

DSC_2004	After removal of heavily stuck bitumen over the pavers in front 1927 Co-Operative Society Corner Building	N	A3
DSC_2007	Brick pavers in front of 1927 Co-Operative Society Corner Building	S	A3
DSC_2008	Brick pavers in front of 1927 Co-Operative Society Corner Building	N	A3

Photographic Record Sheet			
Job No: 3221		Site: Withers Street, West Wallsend	Date: September-October 2013
Photographer: Amanda Reynolds and Tim Adams (Umwelt)			Page: 1 of 2
Description: 1927 Co-Operative Society Building - Withers and Carrington Street Corner. Carrington Street Portion			
Image/File No	Description		Plan Reference
	Subject and Detail	Orientation	
DSC_2523	Limit of brick pavers in front 1910-1915 Co-Operative Society Building on Carrington Street	ESE	A3
DSC_2548	Limit of brick pavers in front 1910-1915 Co-Operative Society Building on Carrington Street	ESE	A3
DSC_2559	Detail of limit of brick pavers in front 1910-1915 Co-Operative Society Building on Carrington Street	SE	A3
DSC_2576	Detail of limit of brick pavers in front 1910-1915 Co-Operative Society Building on Carrington Street	ESE	A3
DSC_2590	Limit of brick pavers in front 1910-1915 Co-Operative Society Building on Carrington Street	WSW	A3
DSC_2593	Limit of brick pavers in front 1910-1915 Co-Operative Society Building on Carrington Street	SW	A3
DSC_2609	Limit of brick pavers in front 1910-1915 Co-Operative Society Building on Carrington Street	SW	A3
DSC_2615	Shop entry with exposed brick pavers in front of 1910-1915 Co-Operative Society Building on Carrington Street	SSW	A3
DSC_2628	Brick pavers in front of 1910-1915 Co-Operative Society Building on Carrington Street	SW	A3
DSC_2635	Brick pavers in front of 1910-1915 Co-Operative Society Building on Carrington Street	W	A3
DSC_2643	Brick pavers in front of 1910-1915 Co-Operative Society Building on Carrington Street	W	A3
DSC_2653	Brick pavers in front of 1927 Co-Operative Society Building - Withers and Carrington Street Corner	SW	A3
DSC_2656	Brick pavers in front of 1927 Co-Operative Society Building - Withers and Carrington Street Corner	SW	A3
DSC_2667	Shop entry with exposed brick pavers in front of 1927 Co-Operative Society Building - Withers and Carrington Street Corner	SW	A3
DSC_2668	Shop entry with exposed brick pavers in front of 1927 Co-Operative Society Building - Withers and Carrington Street Corner	SW	A3
DSC_2679	Detail of shop entry with exposed brick pavers in front of 1927 Co-Operative Society Building - Withers and Carrington Street Corner	SW	A3



<b>Photographic Record Sheet</b>			
DSC_2687	Detail of shop entry with exposed brick pavers in front of 1927 Co-Operative Society Building - Withers and Carrington Street Corner	SW	A3
DSC_2702	Brick pavers in front of 1927 Co-Operative Society Building - Withers and Carrington Street Corner	SSW	A3
DSC_2710	Brick pavers in front of 1927 Co-Operative Society Building - Withers and Carrington Street Corner	SW	A3
DSC_2730	Detail of pavers in front of 1910-1915 Co-Operative Society Building on Carrington Street		A3
DSC_2747	Shop with exposed brick pavers in front of 1910-1915 Co-Operative Society Building on Carrington Street	S	A3

<b>Photographic Record Sheet</b>			
<b>Job No: 3221</b>		<b>Site: Withers Street, West Wallsend</b>	
		<b>Date: September-October 2013</b>	
<b>Photographer: Amanda Reynolds (Umwelt)</b>		<b>Page: 1 of 1</b>	
<b>Description: Paver Details</b>			
	<b>Description</b>		<b>Plan Reference</b>
<b>Image/File No</b>	<b>Subject and Detail</b>	<b>Orientation</b>	
Detail01	Lincoln Brickworks brick paver (scale = 200 millimetres)	-	-
Detail02	Frith's Brickworks brick paver (scale = 200 millimetres)	-	-
Detail03	Frith's Brickworks brick paver – rear (scale = 200 millimetres)	-	-
Detail04	Lincoln Brickworks and Frith's Brickworks brick paver (scale = 200 millimetres)	-	-



DSCN0015.JPG



DSCN0017.JPG



DSCN0019.JPG



DSCN0027.JPG



DSCN0030.JPG



DSCN0034.JPG



DSCN0035.JPG



DSCN0037.JPG



DSCN0038.JPG



DSCN0041.JPG



DSCN0044.JPG



DSCN0045.JPG



DSCN0052.JPG



DSCN0053.JPG



DSCN0058.JPG



DSCN0064.JPG



DSCN0066.JPG



Pre Removal of Asphalt\_040913



DSC\_1366.JPG



DSC\_1374.JPG



DSC\_1382.JPG



DSC\_1383.JPG



DSC\_1388.JPG



DSC\_1392.JPG



DSC\_1399.JPG



DSC\_1400.JPG



DSC\_1405.JPG



DSC\_1410.JPG



DSC\_1413.JPG



DSC\_1421.JPG



DSC\_1429.JPG



DSC\_1431.JPG



DSC\_1439.JPG



DSC\_1442.JPG



DSC\_1452.JPG



DSC\_1455.JPG



DSC\_1461.JPG



DSC\_1467.JPG



DSC\_1473.JPG



DSC\_1477.JPG



DSC\_1481.JPG



DSC\_1485.JPG



DSC\_1490.JPG



DSC\_1503.JPG



DSC\_1513.JPG



DSC\_1525.JPG



DSC\_1532.JPG



DSC\_1535.JPG



DSC\_1545.JPG



DSC\_1548.JPG

Withers and Brown Street Corner - 1906 Co-op Store\_ 170913



DSC\_2022.JPG



DSC\_2045.JPG



DSC\_2048.JPG



DSC\_2058.JPG



DSC\_2070.JPG



DSC\_2078.JPG



DSC\_2096.JPG



DSC\_2106.JPG



DSC\_2114.JPG

Withers Street 1927 Parapet Building – Southern Portion \_110913



DSC\_1604.JPG



DSC\_1608.JPG



DSC\_1620.JPG



DSC\_1626.JPG



DSC\_1636.JPG



DSC\_1685.JPG



DSC\_1672.JPG



DSC\_1693.JPG



DSC\_1697.JPG



DSC\_1706.JPG



DSC\_1714.JPG



DSC\_1721.JPG



DSC\_1734.JPG



DSC\_1740.JPG



DSC\_1756.JPG





DSC\_2166.JPG



DSC\_2168.JPG



DSCN2948.JPG



DSCN2949.JPG



DSCN2950.JPG



DSCN2951.JPG



DSCN2952.JPG



DSCN2956.JPG



DSCN2958.JPG



DSCN2959.JPG



DSCN2960.JPG



DSCN2963.JPG



DSCN2967.JPG



DSCN2973.JPG



DSCN2978.JPG



DSCN2977.JPG



DSCN2978.JPG



DSCN2982.JPG



DSCN2985.JPG



DSCN2990.JPG

Gap in Co-op Store buildings\_120913



DSC\_1804.JPG



DSC\_1805.JPG



DSC\_1890.JPG



DSC\_1894.JPG



DSC\_1896.JPG



DSC\_1898.JPG



DSC\_1927.JPG



DSCN2917.JPG

Withers and Carrington Street Corner building - Withers Street Portion\_130913



DSC\_1817.JPG



DSC\_1856.JPG



DSC\_1867.JPG



DSC\_1873.JPG



DSC\_1882.JPG



DSC\_1885.JPG



DSC\_1908.JPG



DSC\_1914.JPG



DSC\_1918.JPG



DSC\_1950.JPG



DSC\_1964.JPG



DSC\_1968.JPG



DSC\_1981.JPG



DSC\_1984.JPG



DSC\_1987.JPG



DSC\_1975.JPG



DSC\_1980.JPG



DSC\_1992.JPG



DSC\_1994.JPG



DSC\_1999.JPG



DSC\_2002.JPG



DSC\_2004.JPG



DSC\_2007.JPG



DSC\_2008.JPG

Withers and Carrington Street Corner building - Carrington Street Portion 211013



DSC\_2023.JPG



DSC 2840.JPG



DSC 2559.JPG



DSC\_2576.JPG



DSC 2590.JPG



08C 2815.JPG



DSC 2635.JPG



DEC 2849.JPG



DEC 25 1964



DSC 2050 JFG



DSC 2837-P0



DSC 2838-PC



D8C 2878.JPG



DSC\_2007.JPG



DSC 2702.JPG



DSC 2710.JPG



DSC 2730.JPG



DSC\_2747.JPG



## Power Details

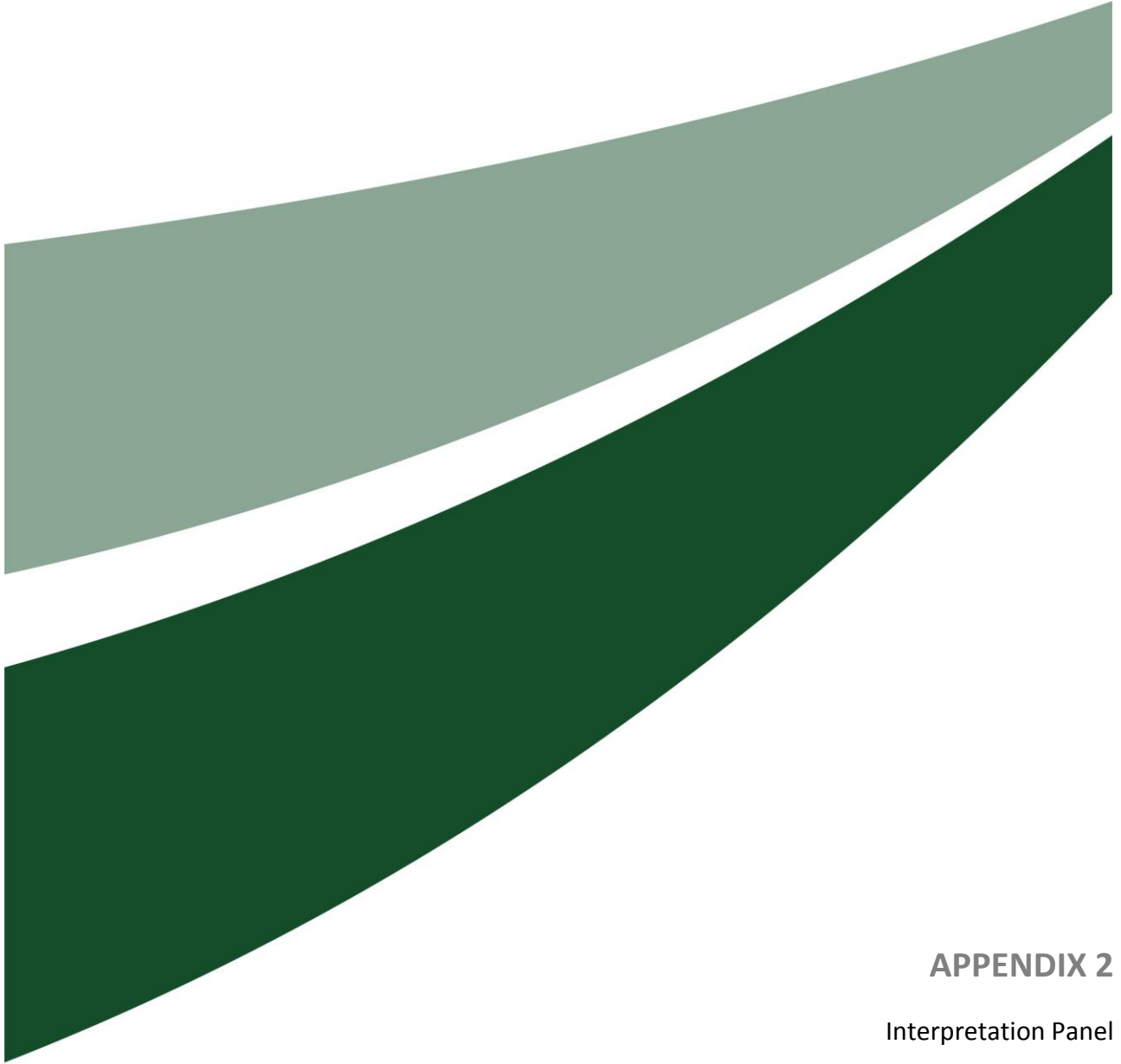


Detail01.JPG

Detail02.JPG

Detail03.JPG

Detail04.JPG



## APPENDIX 2

Interpretation Panel



# THE GOLDEN MILE

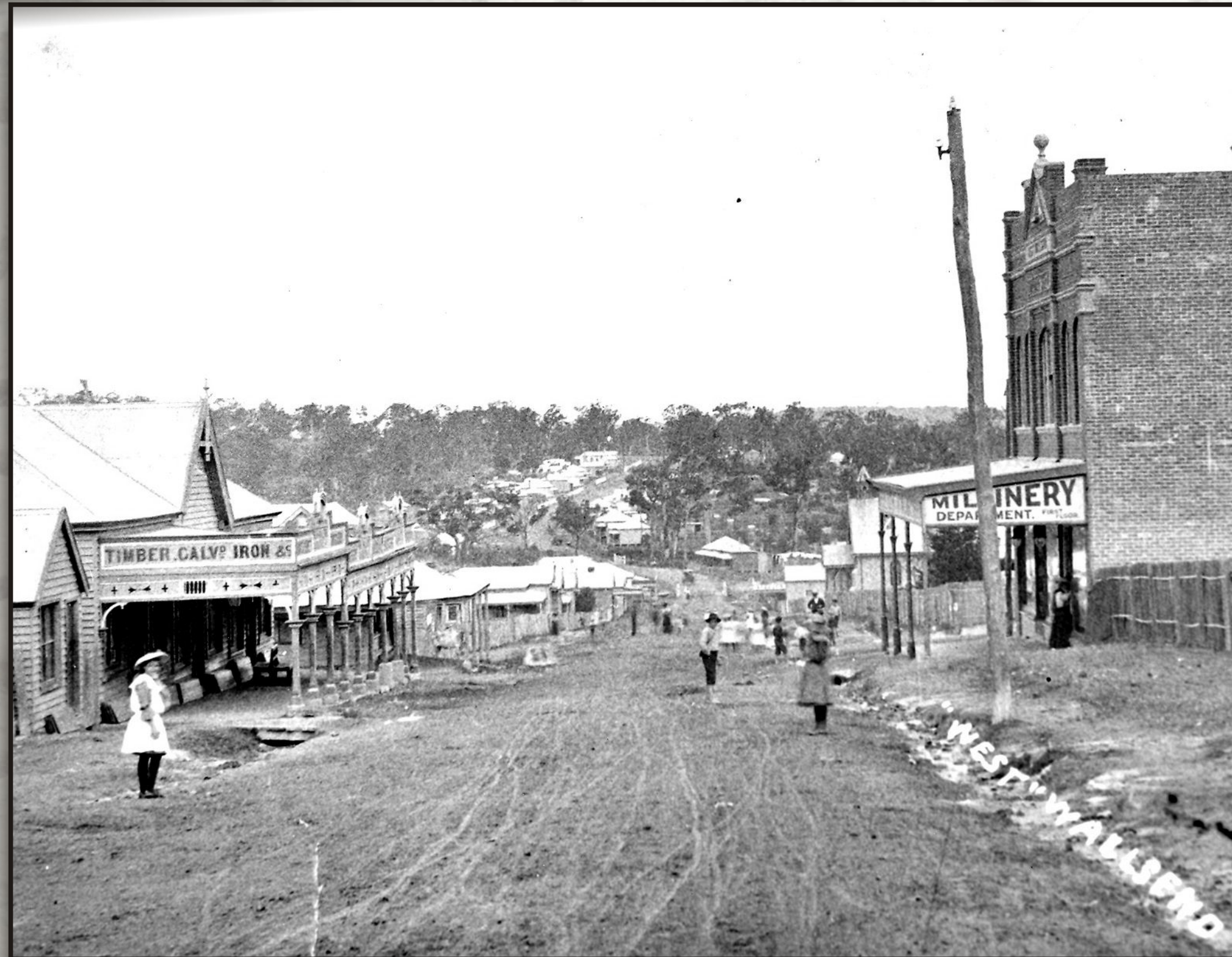
In the 1930s this section of Withers Street was known as the 'Golden Mile'.

During times of hardship caused by industrial disputes, mine lock-outs and the Depression of the 1930s, often the only source of employment for the men of West Wallsend was as part of road construction gangs.

One of these gangs constructed the 'Golden Mile' which included sandstone kerb and guttering along the street and a brick-paved footpath in front of the West Wallsend Co-operative Society Store buildings.

The Co-op Store buildings were constructed between 1906 and 1927 and still operate as shops today. In the mid 1930s, over 40 local people were employed in these stores, even during the Depression.

The Society originally had stabling for 26 horses with deliveries being made by horse-and-cart before being replaced with a fleet of vans.



View down Withers Street showing 1906 Co-op Store on right. The 1927 buildings are not yet constructed.  
Image source: Lake Macquarie City Council



View up Withers Street from Brown Street. 'Golden Mile' pavers can be seen on both sides of the street.  
Image source: Lake Macquarie City Council



1927 Co-op Store buildings and the 'Golden Mile' pavers.  
Image source: West Wallsend District Heritage Group Inc.



1930s photograph of the Co-op Store staff on the 'Golden Mile' paved footpath.

Image courtesy of Mr Tom Reynolds

## Take a look around

As part of the Withers Street upgrade works, Lake Macquarie City Council exposed and recorded the 'Golden Mile' brick pavers.

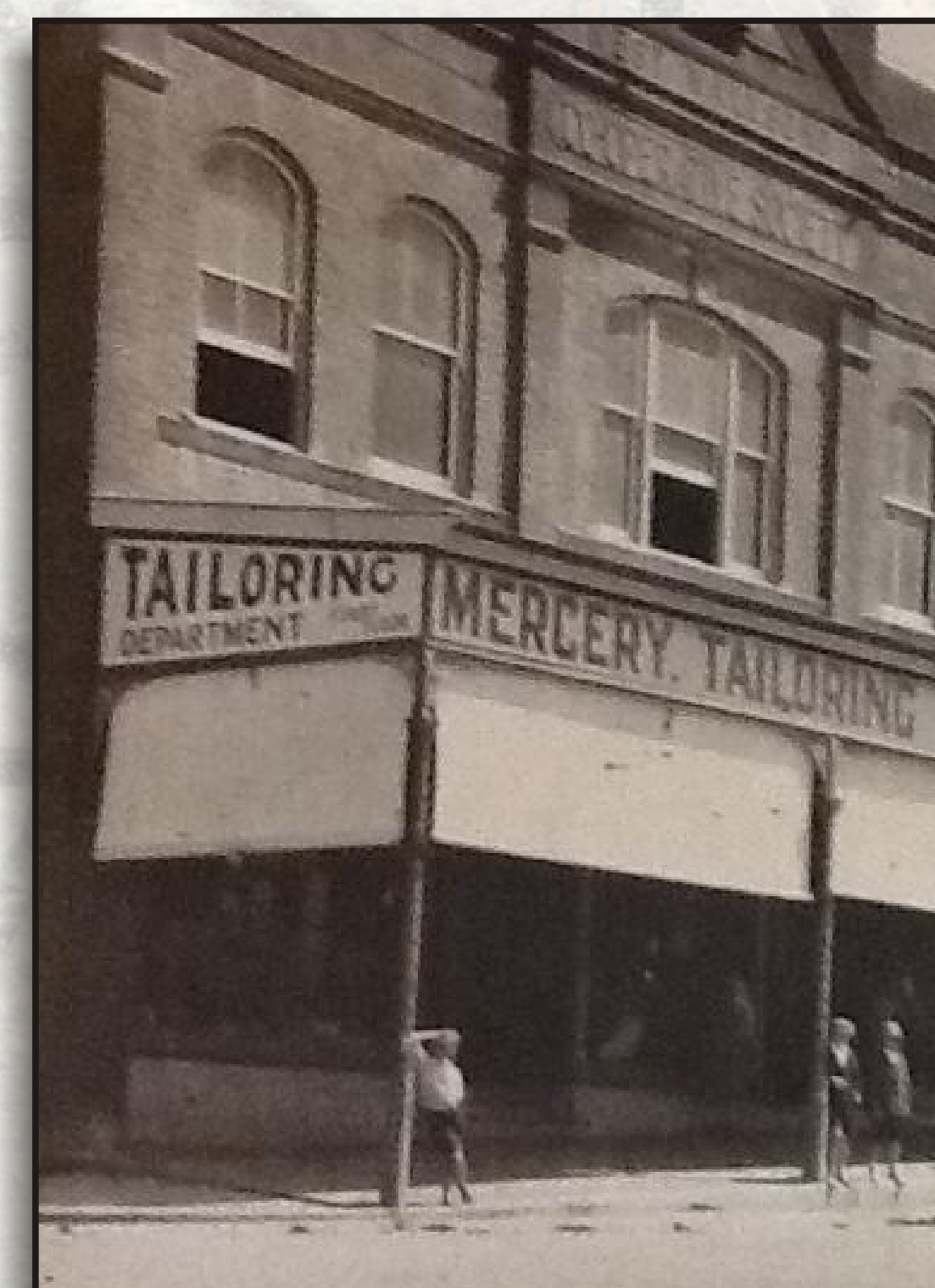
Lincoln Brickworks near Taree and Frith's Brickyard, West Wallsend, supplied the original pavers.

Pavers from Lincoln Brickworks have been used in the new footpath to indicate the location and extent of the original 1930s pavers.

The lines running down the inside edge of the new kerb show the original width of the 'Golden Mile' footpath.

Look below this sign and on the corner of Withers and Brown Streets to see some original 'Golden Mile' pavers.

Further down Withers Street 'Golden Mile' sandstone kerb and guttering can still be seen between Powell and South Streets.



1906 built Co-op building on corner of Withers and Brown Street.  
Image source: West Wallsend District Heritage Group Inc.



1906 built Co-op building on corner of Withers and Brown Street. The 1930s pavers were exposed during street upgrade works.  
Image source: Umwelt (2013)



1906 built Co-op building on corner of Withers and Brown Street. The line of the 'Golden Mile' pavers are shown in the modern footpath.  
Image source: Umwelt (2013)

W E S T W A L L S E N D





Newcastle

75 York Street  
Teralba NSW 2284

Ph. 02 4950 5322

[www.umwelt.com.au](http://www.umwelt.com.au)